



PARTS CATALOGUE

YBR125K ENGINE SELF KICK (5WF2) ITALY

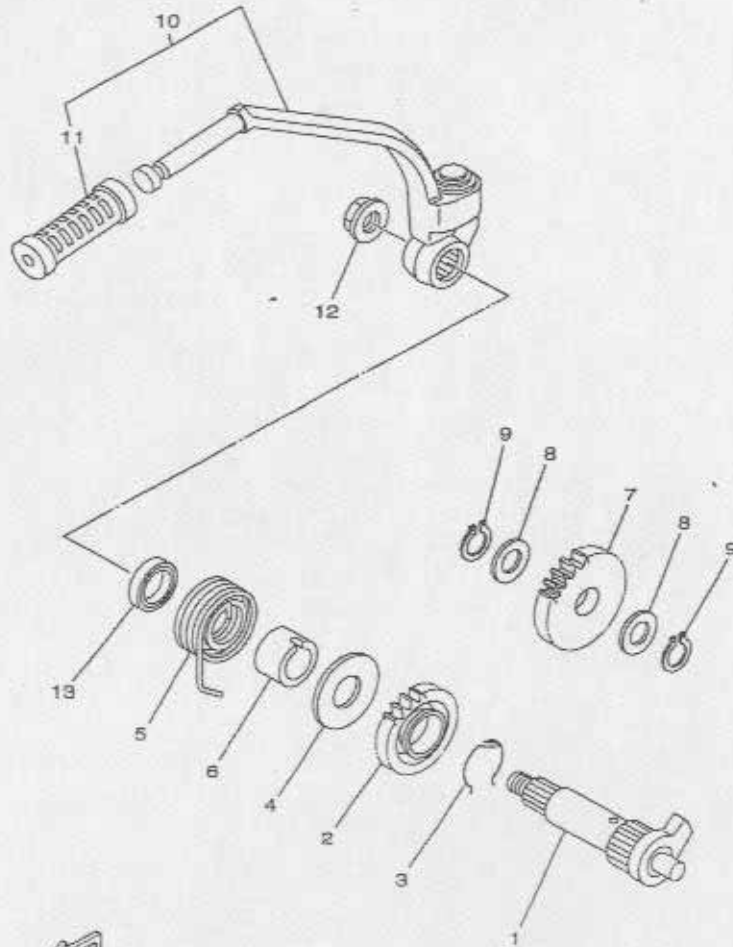
YBR125K ENGINE KICK (5WF3) ITALY



1B5WF-300E1



10 STARTER

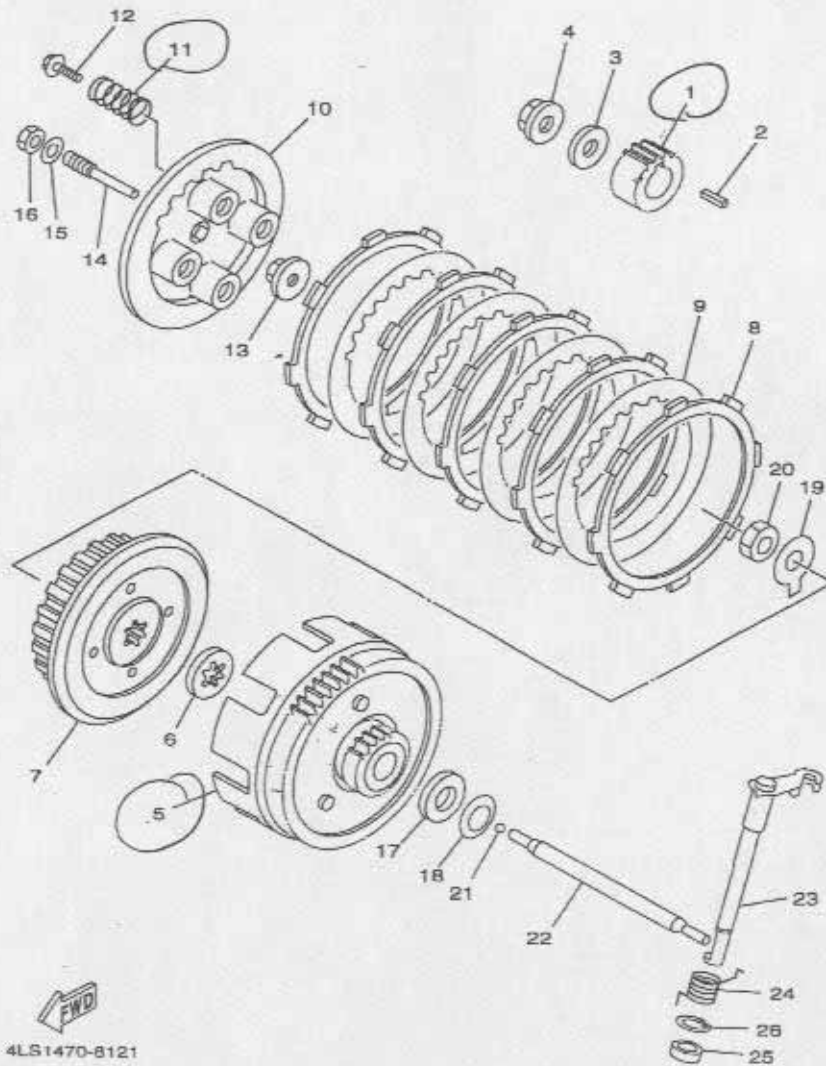


5HH1280-0110

FIG.	CODE	DESCRIPTION
1	ELYBR0085	KICK AXLE ASSY
2	ELYBR0084	GEAR, KICK
3	ELYBR0092	CLIP
4	ELYBR0091	WASHER, PLATE
5	ELYBR0093	SPRING, TORSION
6	ELYBR0088	SPACER
7	ELYBR0089	GEAR, KICK IDLE
8	ELYBR0331	WASHER, PLATE
9	ELYBR0096	CIRCLIP
10	ELYBR0216	KICK CRANK ASSY
11	ELYBR0215	COVER, KICK LEVER
12	ELYBR0111	NUT
13	ELYBR0321	OIL SEAL



12 CLUTCH



FWD
4LS1470-8121

FIG.	CODE	DESCRIPTION
1	ELYBR0302	GEAR, PRIMARY DRIVE
2	ELYBR0115	KEY, STRAIGHT
3	ELYBR0112	WASHER, PLATE
4	ELYBR0111	NUT
5	ELYBR0304	PRIMARY DRIVEN GEAR COMP.
6	ELYBR0100	PLATE, THRUST 1
7	ELYBR0105	BOSS, CLUTCH
8	ELYBR0101	PLATE, FRICTION
9	ELYBR0097	PLATE, CLUTCH 1
10	ELYBR0103	PLATE, PRESSURE 1
11	ELYBR0303	SPRING, COMPRESSION
12	ELYBR0109	BOLT, WITH WASHER
13	ELYBR0098	PLATE, PUSH
14	ELYBR0104	ROD, PUSH 1
15	ELYBR0118	WASHER
16	ELYBR0334	NUT
17	ELYBR0106	PLATE, THRUST 2
18	ELYBR0113	WASHER, CONICAL SPRING
19	ELYBR0114	WASHER, LOCK
20	ELYBR0335	NUT
21	ELYBR0120	BALL
22	ELYBR0107	ROD, PUSH 2
23	ELYBR0108	PUSH LEVER COMP.
24	ELYBR0223	SPRING, TORSION
25	ELYBR0119	OIL SEAL
26	ELYBR0122	CIRCLIP

FOREWORD

This Parts Catalogue is related to the parts for the model(s) in the below frame. When you are ordering replacement parts, please refer to this Parts Catalogue and quote both part numbers and part names correctly.

YBR125K ENGINE (5WF2 / 5WF3)

1. Modifications or additions which have been made after issue of the Parts Catalogue will be announced in the Yamaha Parts News.

It is advisable that you make necessary corrections to the Parts Catalogue according to the Yamaha Parts News.

2. Abbreviations

The following abbreviations are used in this Parts Catalogue.

"UR" Use specified parts number.

"UN" Use as many as needed.

"AP" Alternate Parts

"LM" Local Made (Parts need to be ordered locally)

"F#" Frame No. (Applicable machine No.)

3. Parts, which are to be supplied in an assembly, are listed with a dot(.) in front of the part name as shown below.

EXAMPLE

CARBURETOR ASSY

.JET, PILOT

.NOZZLE, MAIN

4. Number of component for assembly

The numeral appearing to the right of each component part indicates the quantity of parts for each assembly unit.

EXAMPLE

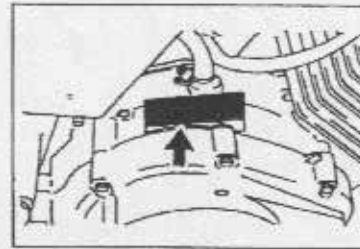
PART NO.	DESCRIPTION	Q'TY.	REMARKS
2F5-83310-60	FRONT FLASHER LIGHT ASSY	2	
115-83311-60	.BULB (6V-1.8W)	1	
1M1-83309-60	.REFLECTOR	1	

5. Applicable colors of graphics are represented in the "REMARKS" as shown below.

PART NO.	DESCRIPTION	Q'TY.	REMARKS
2N4-24110-00-X5	FUEL TANK COMP.	1	MXR
3J1-24240-10	.GRAPHIC, FUEL TANK	1	FOR MXR

6. Applicable Serial No.

Engine Serial No.:



7. Note that the illustrations for reference in finding parts numbers, not to be used for assembling. When assembling, please use the applicable service manual.

8. The asterisk (*) before a reference number indicates modification items after the first edition.



17 STARTING MOTOR

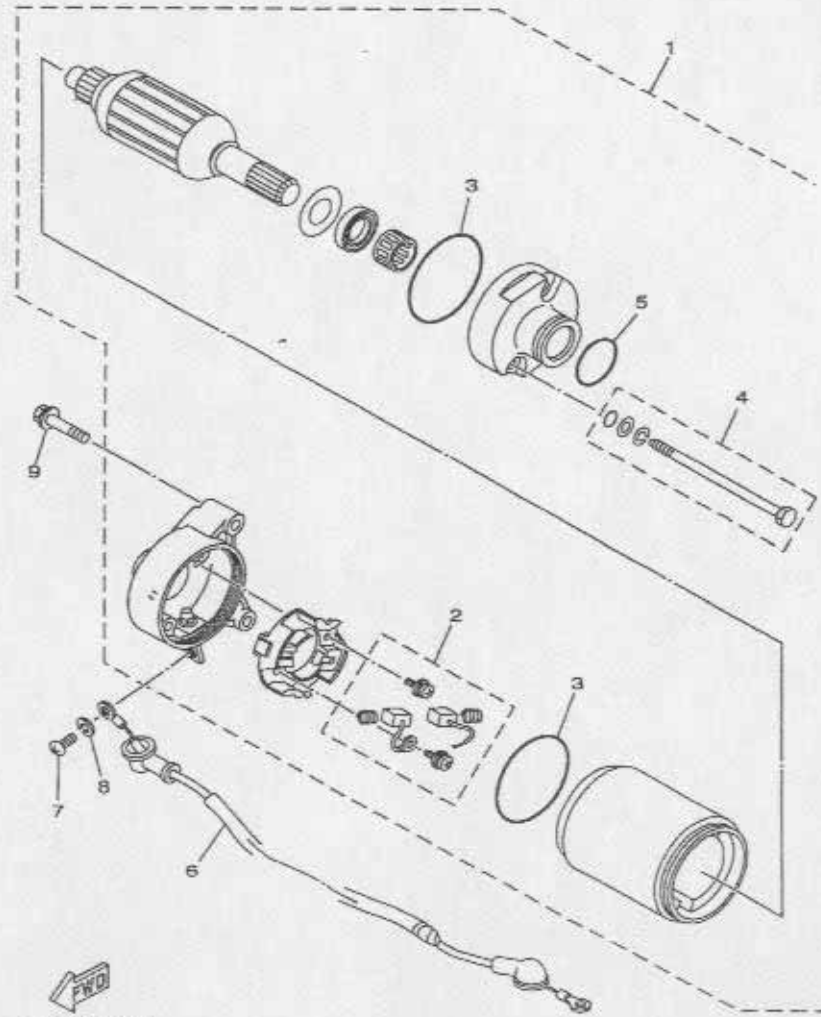


FIG.	CODE	DESCRIPTION
1	ELYBR0004	MOTOR ASSY
2	ELYBR0158	BRUSH SET
3	ELYBR0164	O-RING
4	ELYBR0159	SCREW SET
5	ELYBR0163	O-RING
6	ELYBR0160	CORD COMP.
7	ELYBR0166	SCREW, PAN HEAD
8	ELYBR0162	WASHER, SPRING
9	ELYBR0165	BOLT, FLANGE


SHH1280-0301

7 CARBURETOR

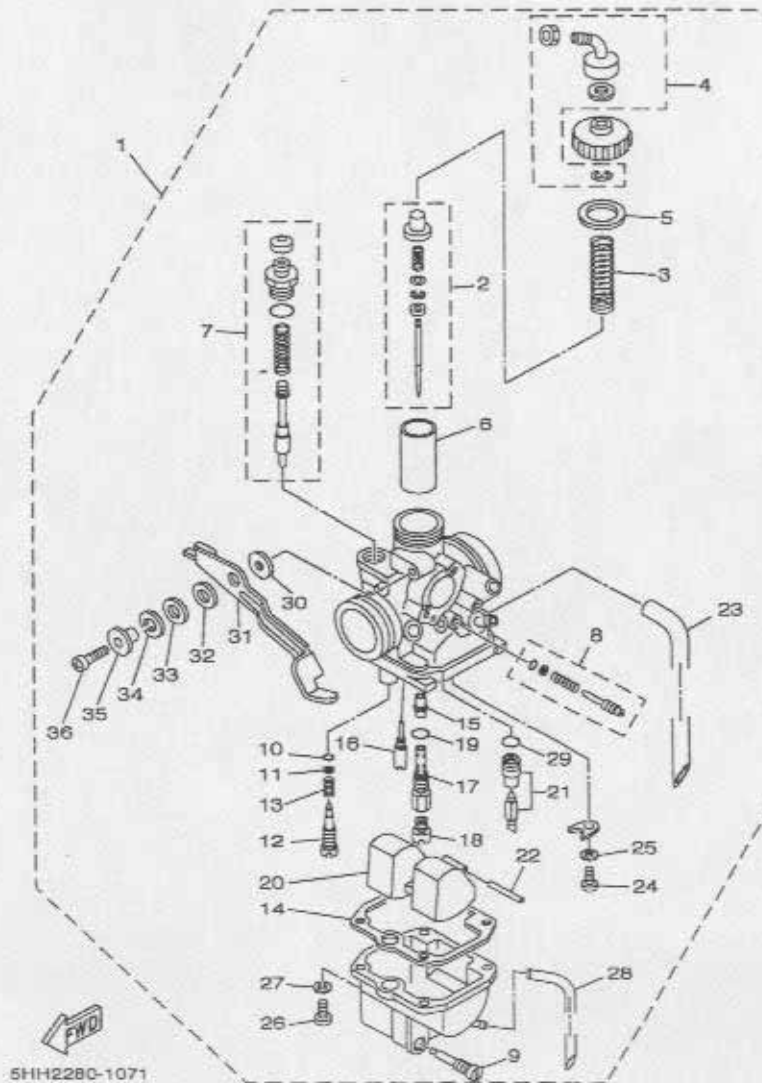


FIG.	CODE	DESCRIPTION
1	ELYBR0082	CARBURETOR ASSY 1
2	ELYBR0266	NEEDLE SET
3	ELYBR0267	SPRING, THROTTLE VALVE
4	ELYBR0268	CABLE ADJUST SCREW SET
5	ELYBR0269	GASKET
6	ELYBR0270	VALVE, THROTTLE 1
7	ELYBR0271	STARTER SET
8	ELYBR0272	THROTTLE SCREW SET
9	ELYBR0273	PLUG, DRAIN
10	ELYBR0274	O-RING
11	ELYBR0275	WASHER
12	ELYBR0276	SCREW, PILOT
13	ELYBR0277	SPRING, AIR ADJUSTING
14	ELYBR0278	GASKET, FLOAT CHAMBER
15	ELYBR0279	NOZZLE, MAIN
16	ELYBR0280	JET, PILOT
17	ELYBR0281	SETTER, NEEDLE JET
18	ELYBR0282	JET, MAIN
19	ELYBR0283	O-RING
20	ELYBR0284	FLOAT
21	ELYBR0285	NEEDLE VALVE SET
22	ELYBR0286	PIN, FLOAT
23	ELYBR0287	PIPE
24	ELYBR0288	SCREW, PAN HEAD
25	ELYBR0289	WASHER, SPRING
26	ELYBR0290	SCREW, PAN HEAD
27	ELYBR0291	WASHER, SPRING
28	ELYBR0292	PIPE
29	ELYBR0293	O-RING
30	ELYBR0294	WASHER, STARTER LEVER
31	ELYBR0295	LEVER
32	ELYBR0296	RING
33	ELYBR0297	WASHER
34	ELYBR0298	WASHER, SPRING
35	ELYBR0299	COLLAR
36	ELYBR0300	SCREW

16 GENERATOR

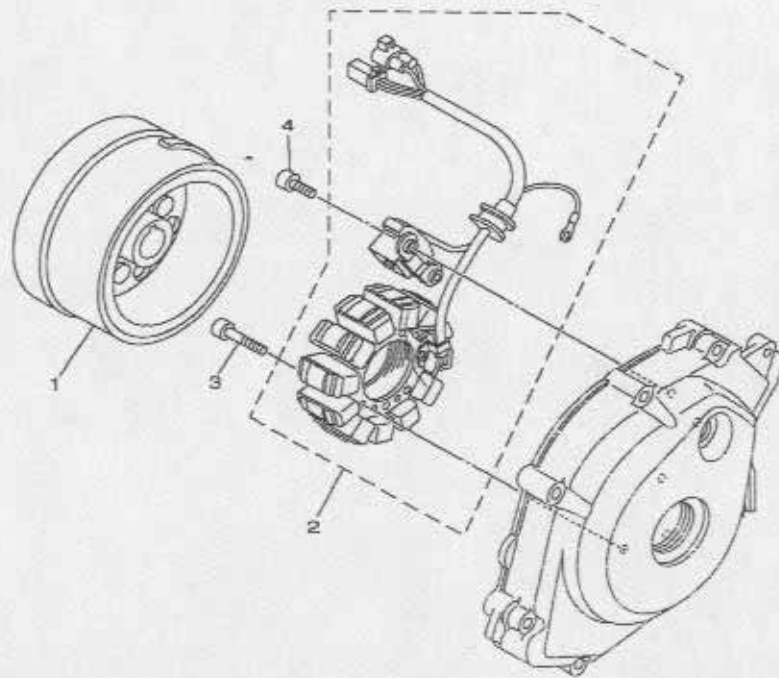


FIG.	CODE	DESCRIPTION
1	ELYBR0253	ROTOR ASSY
2	ELYBR0184	STATOR ASSY
3	ELYBR0147	BOLT
4	ELYBR0252	BOLT



5RR1210-1291



9 CRANKCASE COVER 1

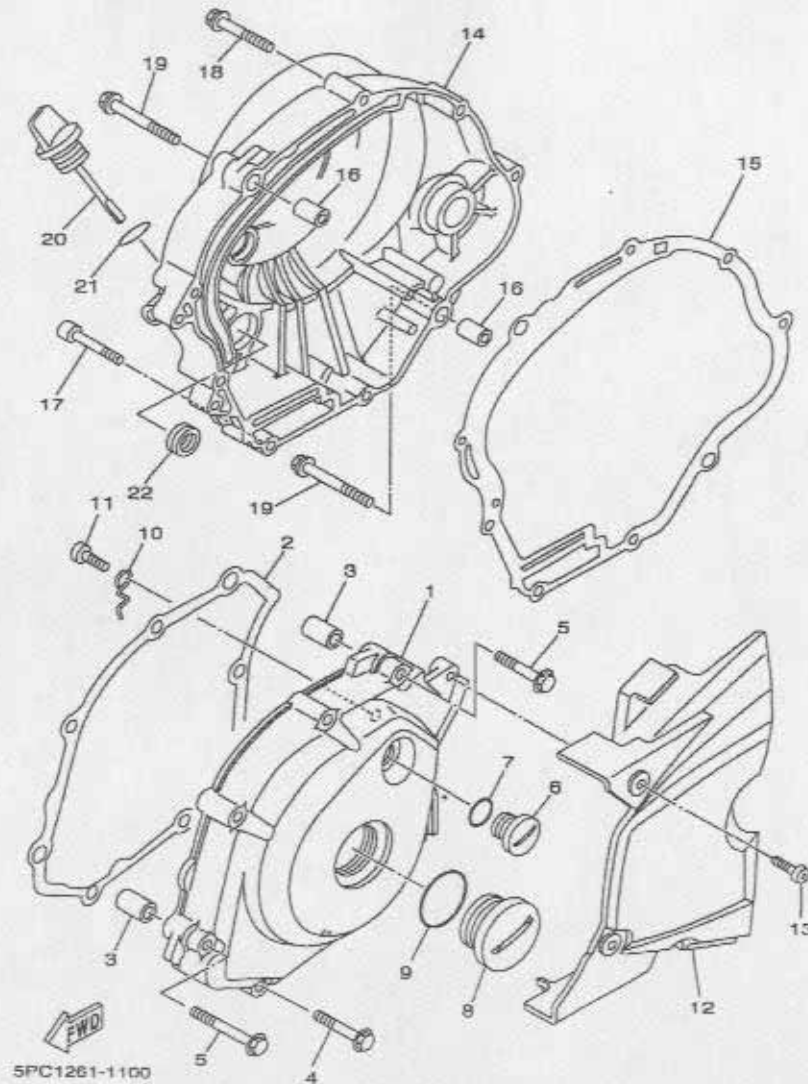


FIG.	CODE	DESCRIPTION
1	ELYBR0194	COVER, CRANKCASE 1
2	ELYBR0198	GASKET, CRANCKCASE COVER 1
3	ELYBR0306	PIN, DOWEL
4	ELYBR0211	BOLT, FLANGE
5	ELYBR0212	BOLT, FLANGE
6	ELYBR0203	PLUG, STRAIGHT SCREW
7	ELYBR0208	O-RING
8	ELYBR0204	PLUG, STRAIGHT SCREW
9	ELYBR0210	O-RING
10	ELYBR0193	PLATE
11	ELYBR0213	SCREW, PAN HEAD
12	EL2109124000	COVER, CHAIN CASE
13	ELYBR0214	SCREW, BIND
14	ELYBR0196	COVER, CRANKCASE 2
15	ELYBR0083	GASKET, CRANCKCASE COVER 2
16	ELYBR0306	PIN, DOWEL
17	ELYBR0206	BOLT
18	ELYBR0211	BOLT, FLANGE
19	ELYBR0212	BOLT, FLANGE
20	ELYBR0190	PLUG, OIL LEVEL
21	ELYBR0209	O-RING
22	ELYBR0207	OIL SEAL

CONTENTS



CYLINDER		1
CRANKSHAFT & PISTON		2
VALVE		3
CAMSHAFT & CHAIN		4
OIL PUMP		5
INTAKE		6
CARBURETOR		7
CRANKCASE		8
CRANKCASE COVER 1		9
STARTER		10
STARTER CLUTCH		11
CLUTCH		12
TRANSMISSION		13
SHIFT CAM & FORK		14
SHIFT SHAFT		15
GENERATOR		16
STARTING MOTOR		17
ELECTRICAL		18



14 SHIFT CAM & FORK

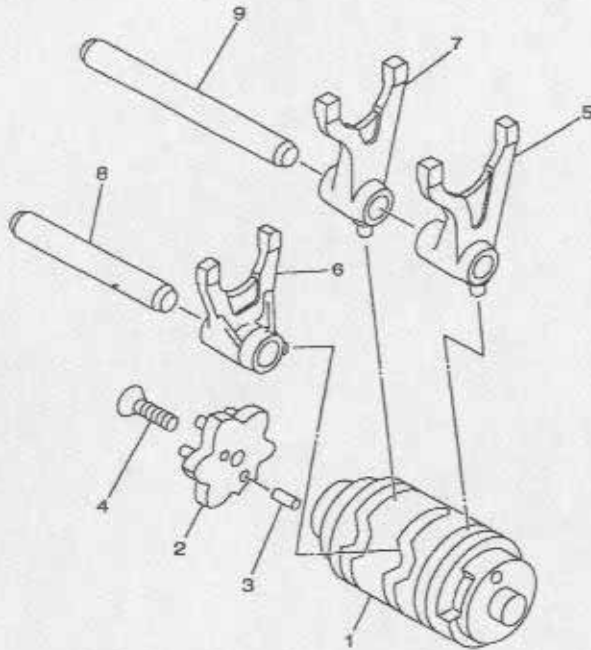


FIG.	CODE	DESCRIPTION
1	ELYBR0241	SHIFT CAM ASSY
2	ELYBR0148	SEGMENT
3	ELYBR0156	PIN, DOWEL
4	ELYBR0243	SCREW
5	ELYBR0149	FORK, SHIFT 1
6	ELYBR0150	FORK, SHIFT 2
7	ELYBR0151	FORK, SHIFT 3
8	ELYBR0152	BAR, SHIFT FORK GUIDE 1
9	ELYBR0153	BAR, SHIFT FORK GUIDE 2



5HP1100-0140



1 CYLINDER

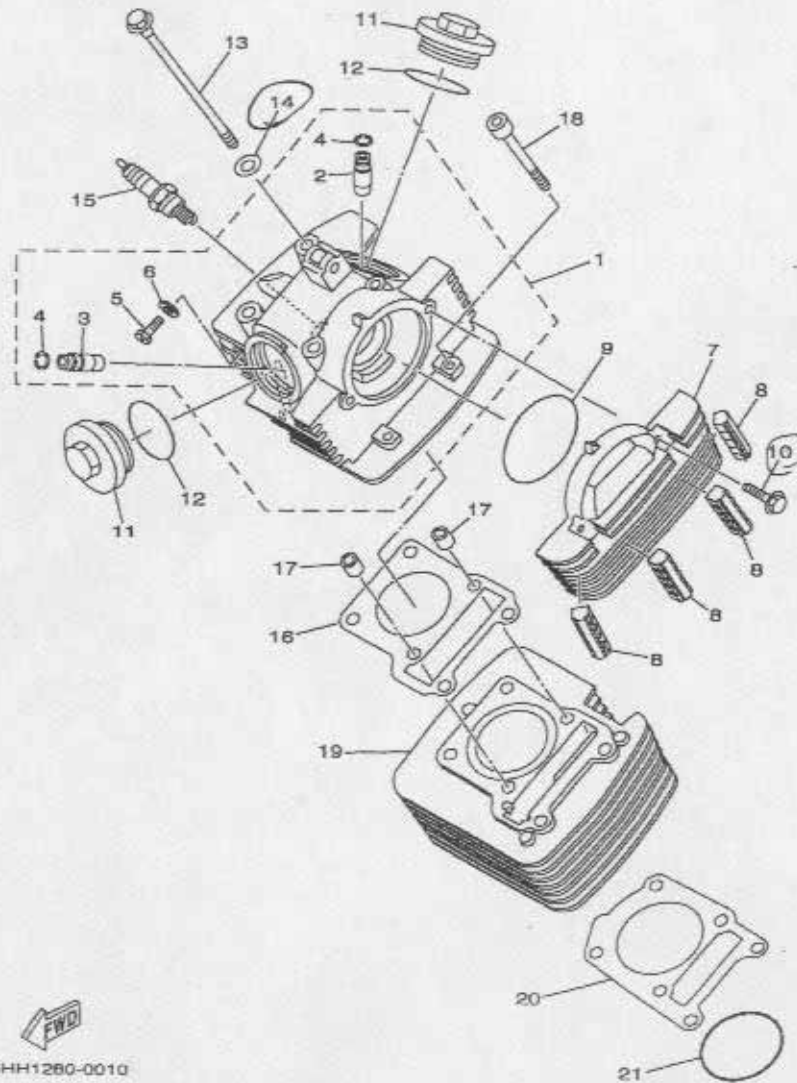
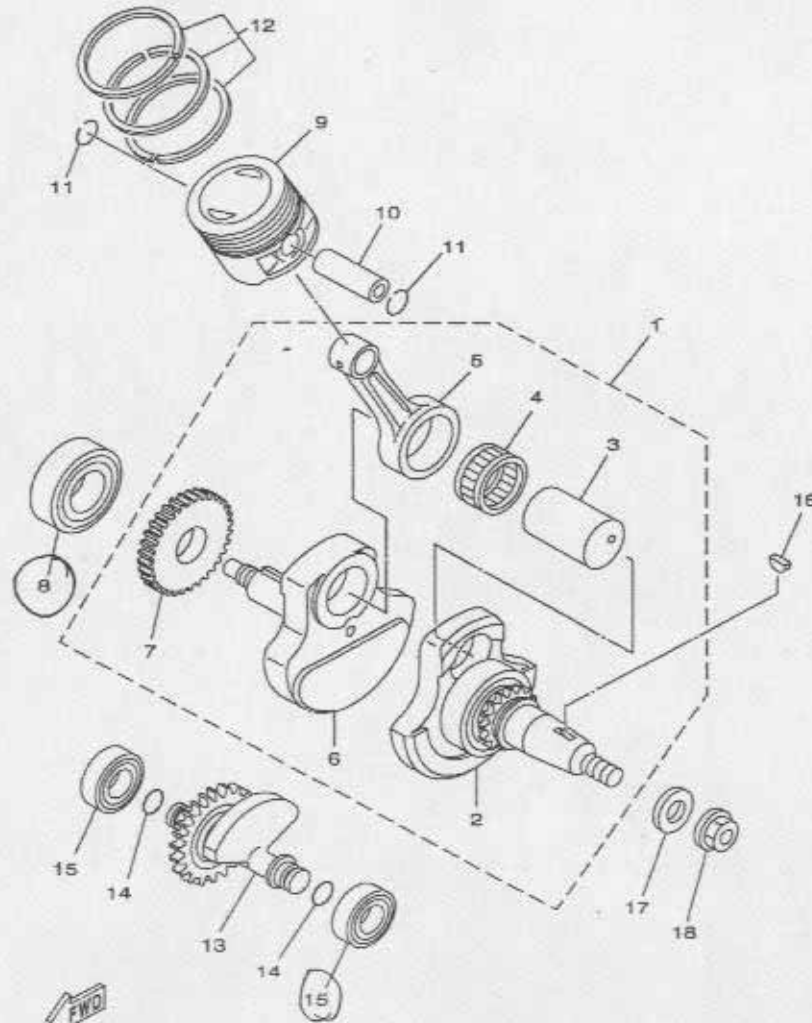


FIG.	CODE	DESCRIPTION
1	ELYBR0011	HEAD, CYLINDER
2	ELYBR0009	GUIDE, VALVE 1
3	ELYBR0008	GUIDE, VALVE 2
4	ELYBR0025	CIRCLIP
5	ELYBR0019	SCREW, HEXAGON
6	ELYBR0021	GASKET
7	ELYBR0013	COVER, CYLINDER HEAD SIDE 1
8	ELYBR0012	ABSORBER
9	ELYBR0024	O-RING
10	ELYBR0035	BOLT, FLANGE
11	ELYBR0014	COVER, CYLINDER HEAD SIDE 2
12	ELYBR0022	O-RING
13	ELYBR0017	BOLT, FLANGE
14	ELYBR0324	WASHER, PLATE
15	ELYBR0026	PLUG, SPARK
16	ELYBR0010	GASKET, CYLINDER HEAD 1
17	ELYBR0306	PIN, DOWEL
18	ELYBR0018	BOLT, HEXAGON SOCKET HEAD
19	ELYBR0015	CYLINDER
20	ELYBR0016	GASKET, CYLINDER
21	ELYBR0023	O-RING



2 CRANKSHAFT & PISTON



5HH3280-A020

FIG.	CODE	DESCRIPTION
1	ELYBR0171	CRANKSHAFT ASSY
2	ELYBR0177	CRANK 1
3	ELYBR0033	PIN, CRANK 1
4	ELYBR0041	BEARING
5	ELYBR0032	ROD, CONNECTING
6	ELYBR0172	CRANK 2
7	ELYBR0170	GEAR, DRIVE
8	ELYBR0040	BEARING
9	ELYBR0031	PISTON (STD)
	ELYBR0256	PISTON (0.50MM O/S)
	ELYBR0257	PISTON (1.00MM O/S)
10	ELYBR0029	PIN, PISTON
11	ELYBR0042	CIRCLIP
12	ELYBR0258	PISTON RING SET (STD)
	ELYBR0307	PISTON RING SET (0.50MM O/S)
	ELYBR0308	PISTON RING SET (1.00MM O/S)
13	ELYBR0036	BALANCER ASSY
14	ELYBR0038	O-RING
15	ELYBR0327	BEARING
16	EL4901268000	KEY, WOODRUFF
17	ELYBR0112	WASHER, PLATE
18	ELYBR0180	NUT, FLANGE



3 VALVE

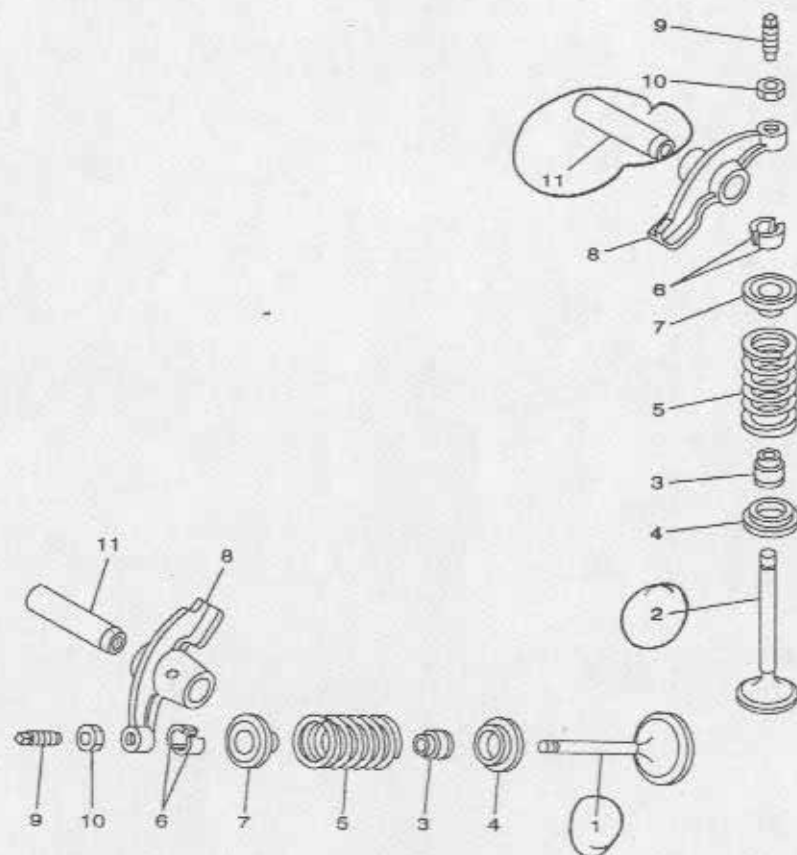


FIG.	CODE	DESCRIPTION
1	ELYBR0059	VALVE, INTAKE
2	ELYBR0060	VALVE, EXHAUST
3	ELYBR0047	SEAL, VALVE STEM
4	ELYBR0043	SEAL, VALVE SPRING
5	ELYBR0051	SPRING, VALVE INNER
6	ELYBR0045	COTTER, VALVE
7	ELYBR0044	RETAINER, VALVE SPRING
8	ELYBR0049	ARM, VALVE ROCKER
9	ELYBR0046	SCREW, VALVE ADJUSTING
10	ELYBR0063	NUT
11	ELYBR0259	SHAFT, ROCKER 2



4 CAMSHAFT & CHAIN

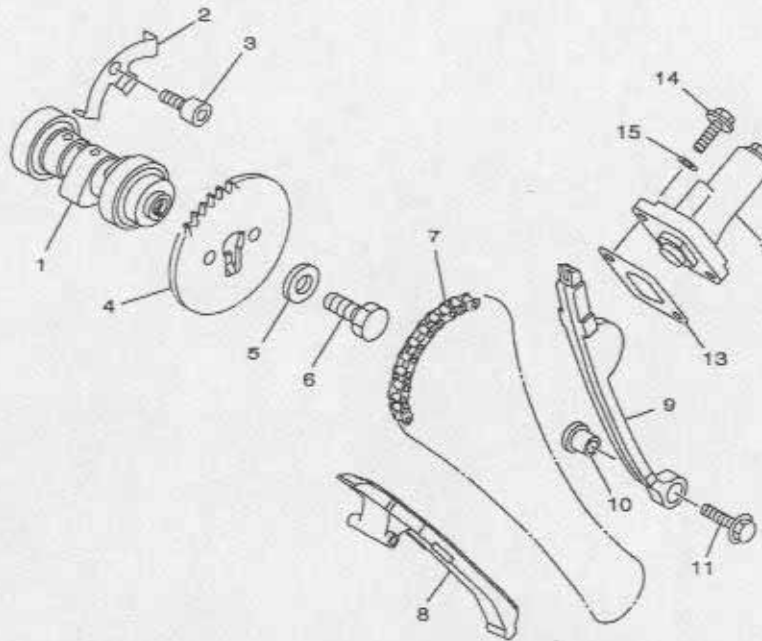


FIG.	CODE	DESCRIPTION
1	ELYBR0055	CAMSHAFT ASSY 1
2	ELYBR0053	PLATE
3	ELYBR0066	BOLT
4	ELYBR0181	SPROCKET, CAM CHAIN
5	ELYBR0064	WASHER, PLATE
6	ELYBR0062	BOLT
7	ELYBR0067	CHAIN
8	ELYBR0182	GUIDE, STOPPER 1
9	ELYBR0183	GUIDE, STOPPER 2
10	ELYBR0058	COLLAR
11	ELYBR0069	BOLT, FLANGE
12	ELYBR0048	TENSIOMETER ASSY, CAM CHAIN
13	ELYBR0057	GASKET, TENSIONER CASE
14	ELYBR0068	BOLT, FLANGE
15	ELYBR0065	GASKET



5HP1100-0040



5 OIL PUMP

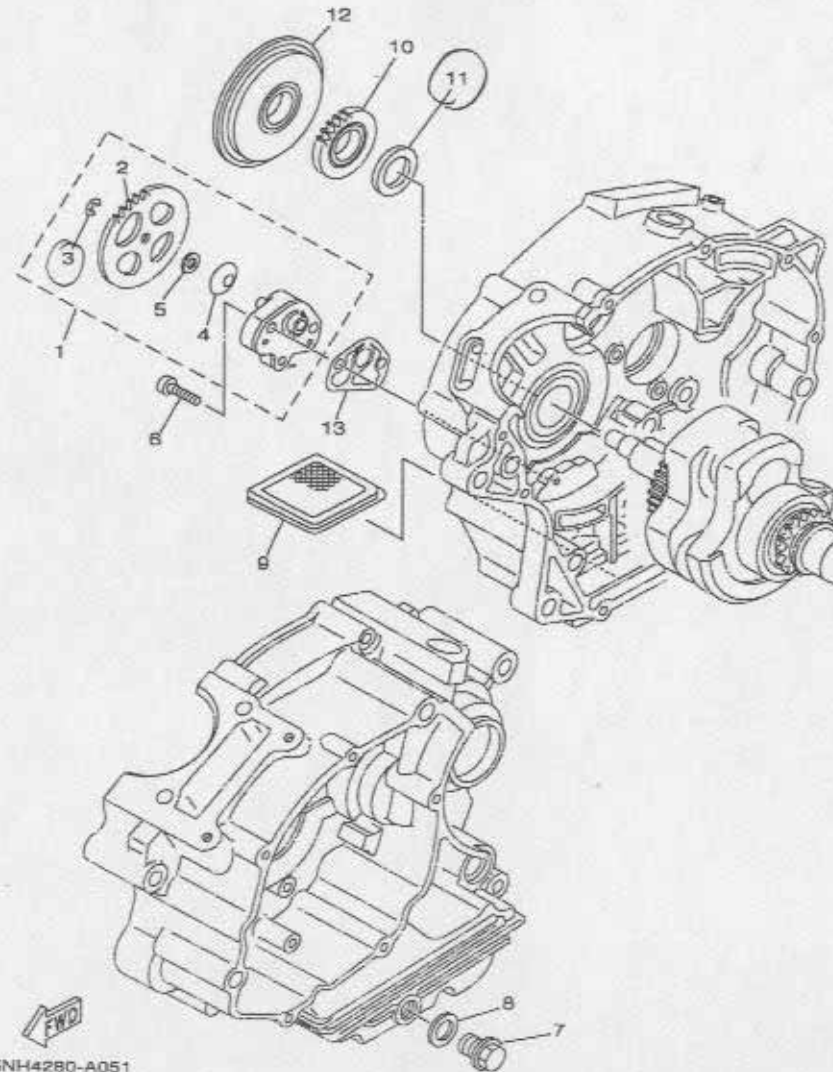


FIG.	CODE	DESCRIPTION
1	ELYBR0185	OIL PUMP ASSY
2	ELYBR0071	GEAR, PUMP DRIVEN
3	ELYBR0328	CIRCLIP
4	ELYBR0078	WASHER, CONICAL SPRING
5	ELYBR0077	WASHER, PLATE
6	ELYBR0076	SCREW, FLAT FILLISTER
7	ELYBR0079	PLUG, STRAIGHT SCREW
8	ELYBR0080	GASKET
9	ELYBR0187	STRAINER, OIL
10	ELYBR0186	GEAR, PUMP DRIVE
11	ELYBR0329	WASHER, PLAIN
12	ELYBR0188	FILTER, ROTARY
13	ELYBR0075	GASKET, PUMP COVER

6 INTAKE

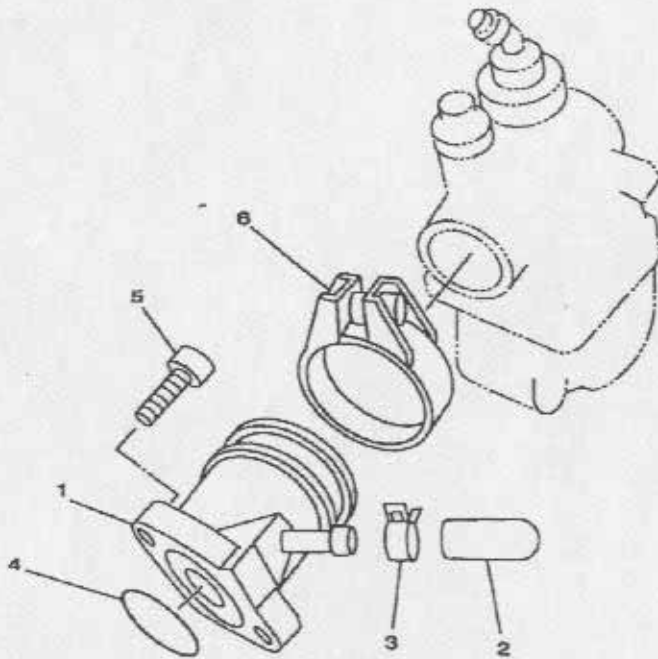


FIG.	CODE	DESCRIPTION
1	ELYBR0330	JOINT, CARBURETOR 1
2	ELYBR0261	PLUG, BLIND
3	ELYBR0262	CLIP
4	ELYBR0263	O-RING
5	ELYBR0264	BOLT
6	ELYBR0322	HOSE CLAMP ASSY

11 STARTER CLUTCH

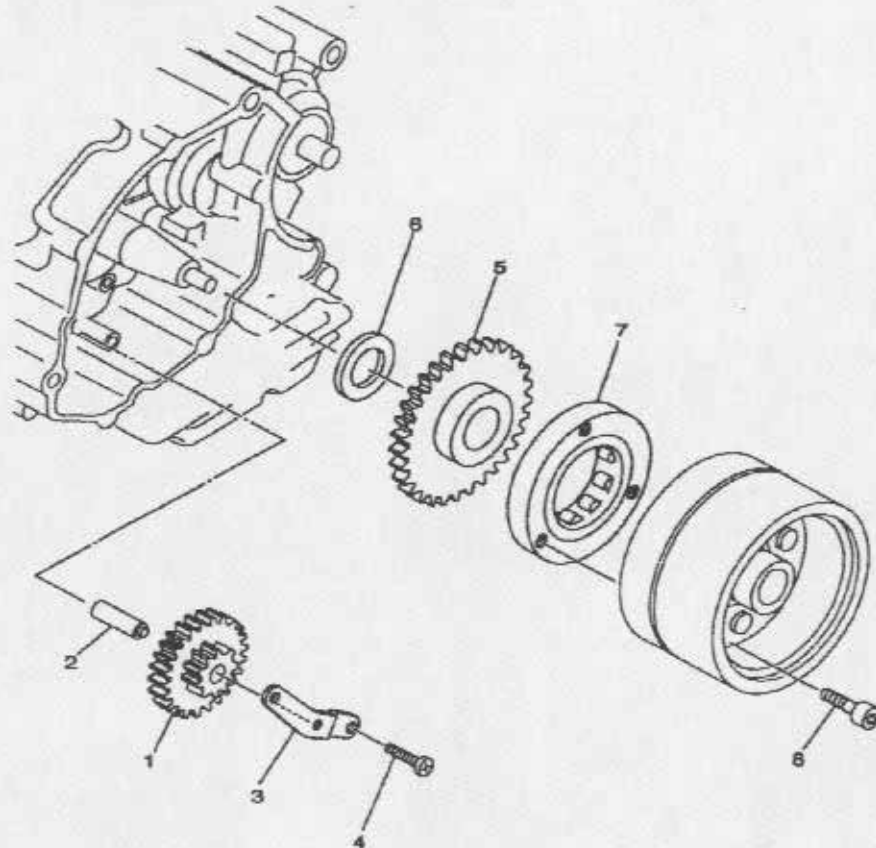
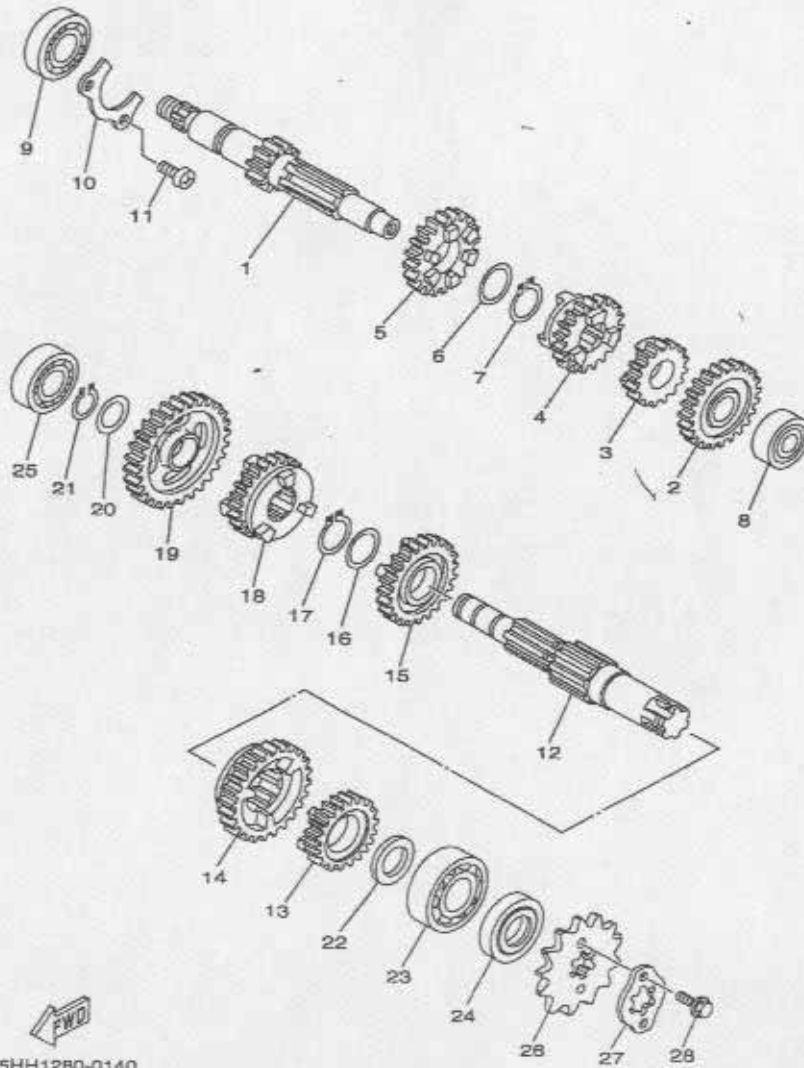


FIG.	CODE	DESCRIPTION
1	ELYBR0332	GEAR, IDLER 1
2	ELYBR0086	SHAFT 1
3	ELYBR0087	PLATE, IDLE GEAR
4	ELYBR0095	SCREW, PAN HEAD
5	ELYBR0333	GEAR, IDLER 2
6	ELYBR0007	WASHER, PLATE
7	ELYBR0003	STARTER ONE-WAY ASSY
8	ELYBR0094	BOLT



5H-H1280-0120

13 TRANSMISSION



5HH1280-0140

FIG.	CODE	DESCRIPTION
1	ELYBR0227	AXLE, MAIN
2	ELYBR0129	GEAR, 5TH PINION
3	ELYBR0124	GEAR, 2ND PINION
4	ELYBR0125	GEAR, 3RD PINION
5	ELYBR0224	GEAR, 4TH PINION
6	ELYBR0137	WASHER, PLATE
7	ELYBR0236	CIRCLIP
8	ELYBR0232	BEARING
9	ELYBR0234	BEARING
10	ELYBR0135	PLATE, COVER
11	ELYBR0146	SCREW, PAN HEAD
12	ELYBR0226	DRIVE AXLE ASSY
13	ELYBR0130	GEAR, 5TH WHEEL
14	ELYBR0132	GEAR, 2ND WHEEL
15	ELYBR0225	GEAR, 3RD WHEEL
16	ELYBR0137	WASHER, PLATE
17	ELYBR0236	CIRCLIP
18	ELYBR0127	GEAR, 4TH WHEEL
19	ELYBR0126	GEAR, 1ST WHEEL
20	ELYBR0336	WASHER, PLATE
21	ELYBR0096	CIRCLIP
22	ELYBR0138	WASHER, PLATE
23	ELYBR0235	BEARING
24	ELYBR0139	OIL SEAL
25	ELYBR0233	BEARING
26	ELYBR0145	SPROCKET, DRIVE
27	ELYBR0337	HOLDER, SPROCKET
28	ELYBR0323	BOLT, FLANGE



8 CRANKCASE

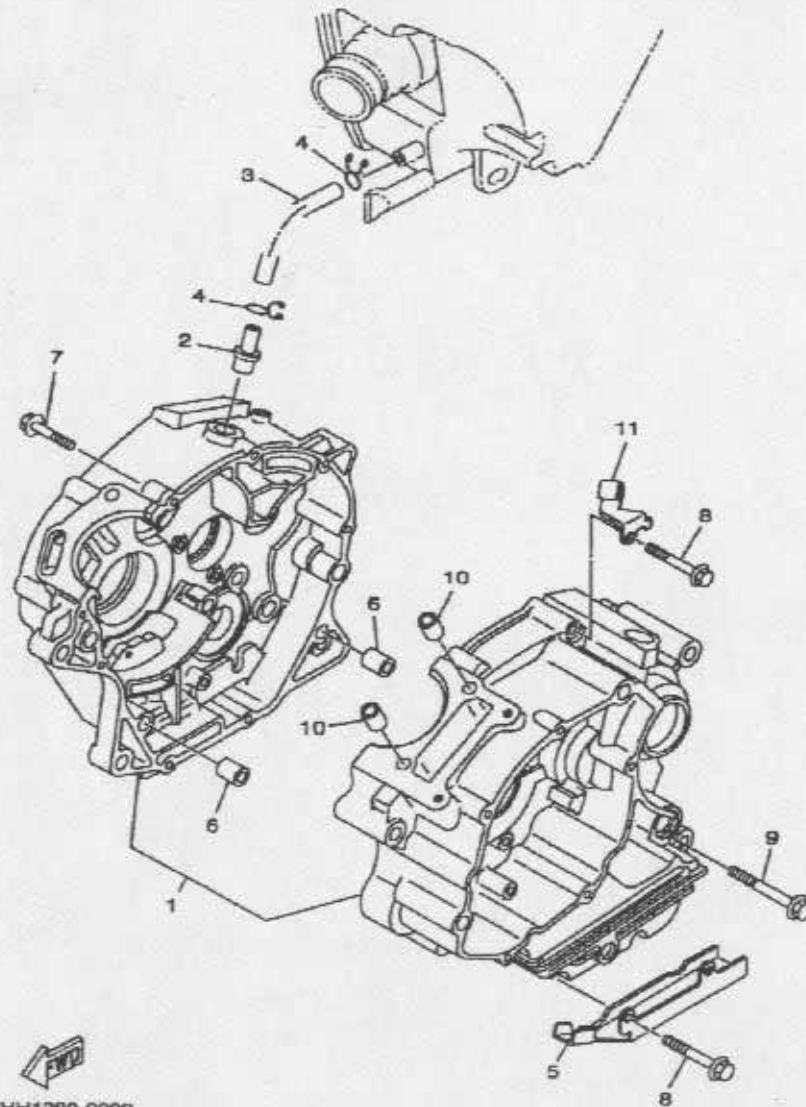


FIG.	CODE	DESCRIPTION
1	ELYBR0301	CRANKCASE ASSY
2	ELYBR0192	PIPE, BREATHER 2
3	ELYBR0191	PIPE, BREATHER 1
4	ELYBR0205	CLIP
5	ELYBR0305	CLAMP
6	ELYBR0306	PIN, DOWEL
7	ELYBR0200	BOLT
8	ELYBR0201	BOLT
9	ELYBR0202	BOLT
10	ELYBR0306	PIN, DOWEL
11	ELYBR0197	HOLDER, CLUTCH CABLE

15 SHIFT SHAFT

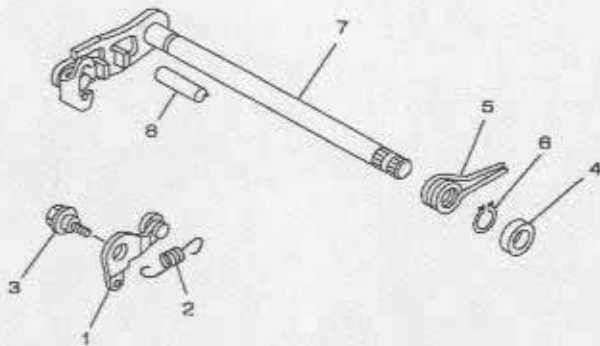
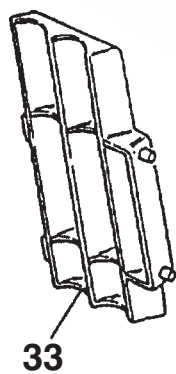
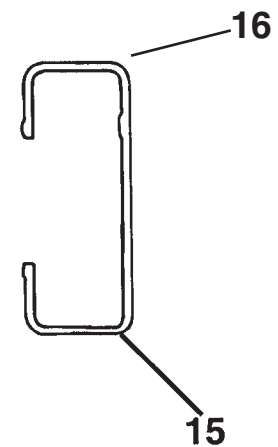
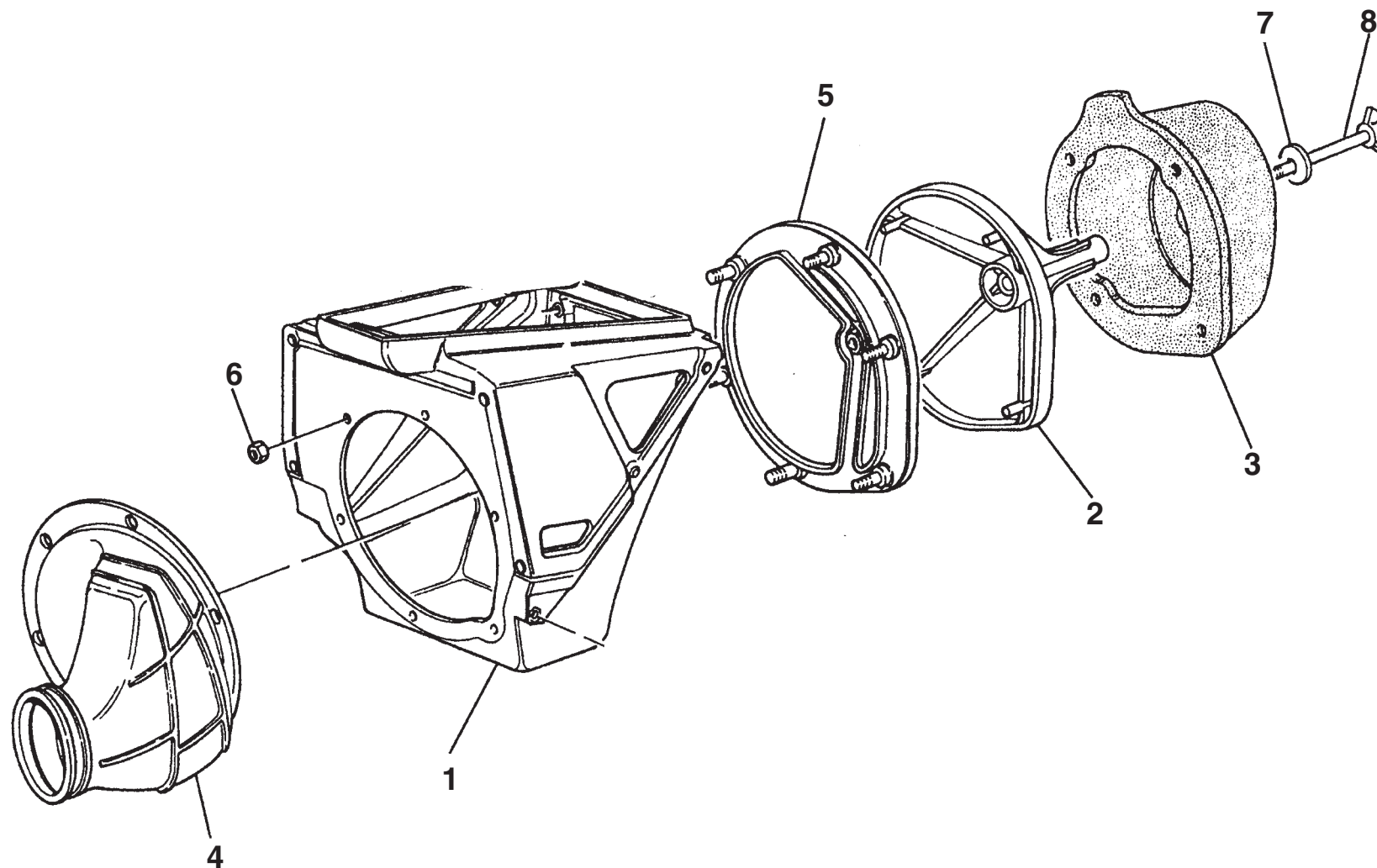


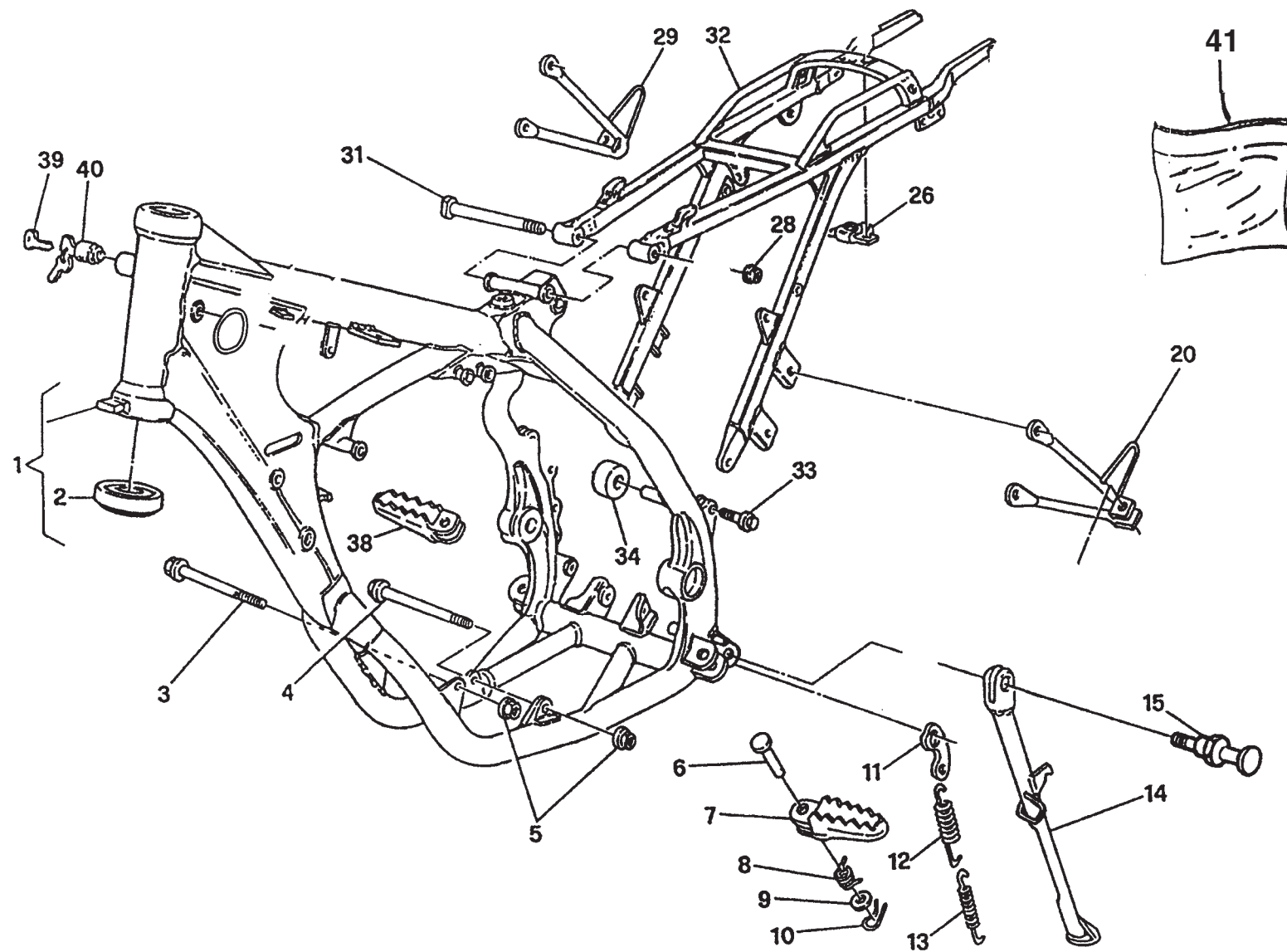
FIG.	CODE	DESCRIPTION
1	ELYBR0237	STOPPER LEVER ASSY
2	ELYBR0240	SPRING
3	ELYBR0325	BOLT
4	ELYBR0245	OIL SEAL
5	ELYBR0244	SPRING, TORSION
6	ELYBR0326	CIRCLIP
7	ELYBR0238	SHIFT SHAFT ASSY
8	ELYBR0246	PIN, DOWEL



5WF1300-A151







WXE-WSM 125

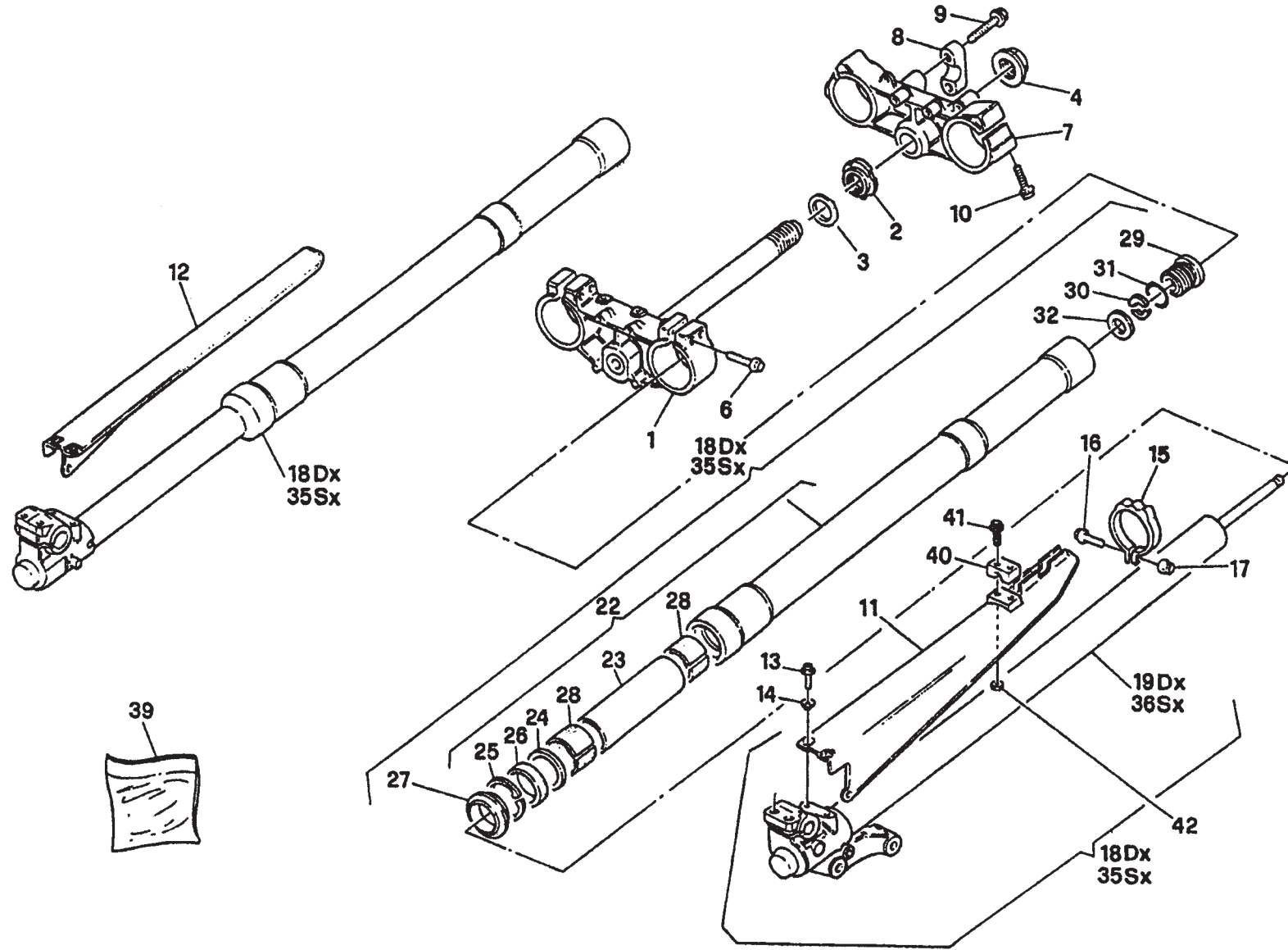
TAVOLA
DRAWING
TABLE
BILD
TABLA

3

TELAIO, PEDANE - FRAME, FOOT RESTS CADRE, REPOSE PIEDS - RAHMEN, FUSSBRETT BASTIDOR, REPOSAPIES

Note Notes Notas	Pos. No. Index Pos.	N. Cod. Code No. Nr. Code Code Nr N. Cod.	Q.tà Q.ty Q.te M.ge C.ad	DENOMINAZIONE	NAME	DESIGNATION	BESHREIBUNG	DENOMINACION	Validità Validity Validité Gültig Validez
	1	XH3081A0	1	Telaio	Frame	Caore	Rahmen	Cuadro	
	2	N0003701	2	Cuscinetto a rulli conici	Bearing (ø25xø50x17,5 mm)	Roulement à roulewux	Lager (ø25xø50x17,5 mm)	Cojinete de rodillos cónicos	
	3	N1000725	4	Perno ant. fiss. motore	Pin	Pivot	Bolzen	Perno	
	4	N1000215	2	Perno inf. fiss. motore	Pin	Pivot	Bolzen	Perno	
	5	N1003003	6	Dado	Nut	Ecrou	Mutter	Tuerca	
	6	EH800073140	2	Perno	Pin	Pivot	Bolzen	Perno	
	7	EH80A072564	1	Pedana sinistra	L.H. foot-rest	Repose-pieds	L. Fussraste	Pedal del. i.comp.	
	8	EH800073341	1	Molla	Spring	Ressort	Feder	Resorte	
	9	N1001522	2	Rosetta	Washer	Rondelle	Scheibe	Arandela	
	10	N1012803	2	Copiglia	Split pin	Goupille	Splint	Clavija	
	11	EH800043967	1	Piastrina	Plate	Plaque	Platte	Plaque	
	12	EH800062675	1	Molla esterna	Spring	Ressort	Feder	Resorte	
	13	EH800062676	1	Molla interna	Spring	Ressort	Feder	Resorte	
W	14	XH3077A0	1	Gamba laterale	Side stand	Bequille lat.	Seitenständer	Horquilla lateral	
S	14	XH3074A0	1	Gamba laterale	Side stand	Bequille lat.	Seitenständer	Horquilla lateral	
	15	N1001102	1	Vite	Screw	Vis	Schraube	Tornillo	
	20	XH3237A0	1	Supporto Sx.	L.H. support	Support G.	Halterung L.	Soporte izq.	
	26	EH800069150	1	Piastrina	Plate	Plaque	Plättchen	Placa	
	28	N1003003	1	Dado autobloccante	Nut	Ecrou	Mutter	Tuerca	
	29	XH3238A0	1	Supporto Dx	R.H. support	Support D.	Halterung R.	Soporte der.	
	31	N1000328	1	Vite	Screw	Vis	Schraube	Tornillo	
	32	XH3415A0	1	Parte posteriore telaio	Rear frame side	Chassis arrière	Sattelbrücke	Cuadro posterior	
	33	N1000720	2	Vite	Screw	Vis	Schraube	Tornillo	
	34	XH302600	2	Rullo catena	Roller	Aiguille	Rolle	Rodillo	
	38	XH3502A0	1	Pedana destra	R.H. foot-rest	Repose-pieds D.	R. Fussraste	Pedal del.d.com.	
	39	EH800035531	1	Chiave grezza	Raw key	Clef primitive	Schlüssel	Llave	
	40	XH341400	1	Serratura antifurto completa	Anti-left lock assy	Serrure anti-vol compl.	Sicherheitsschloss kpl.	Cerradura compl.	
	41	XH324600	1	Kit Pedana Pass.	Foot-rest Kit	Repose-pieds Kit	Fussraste	Kit Pedal del com.	





WXE-WSM 125

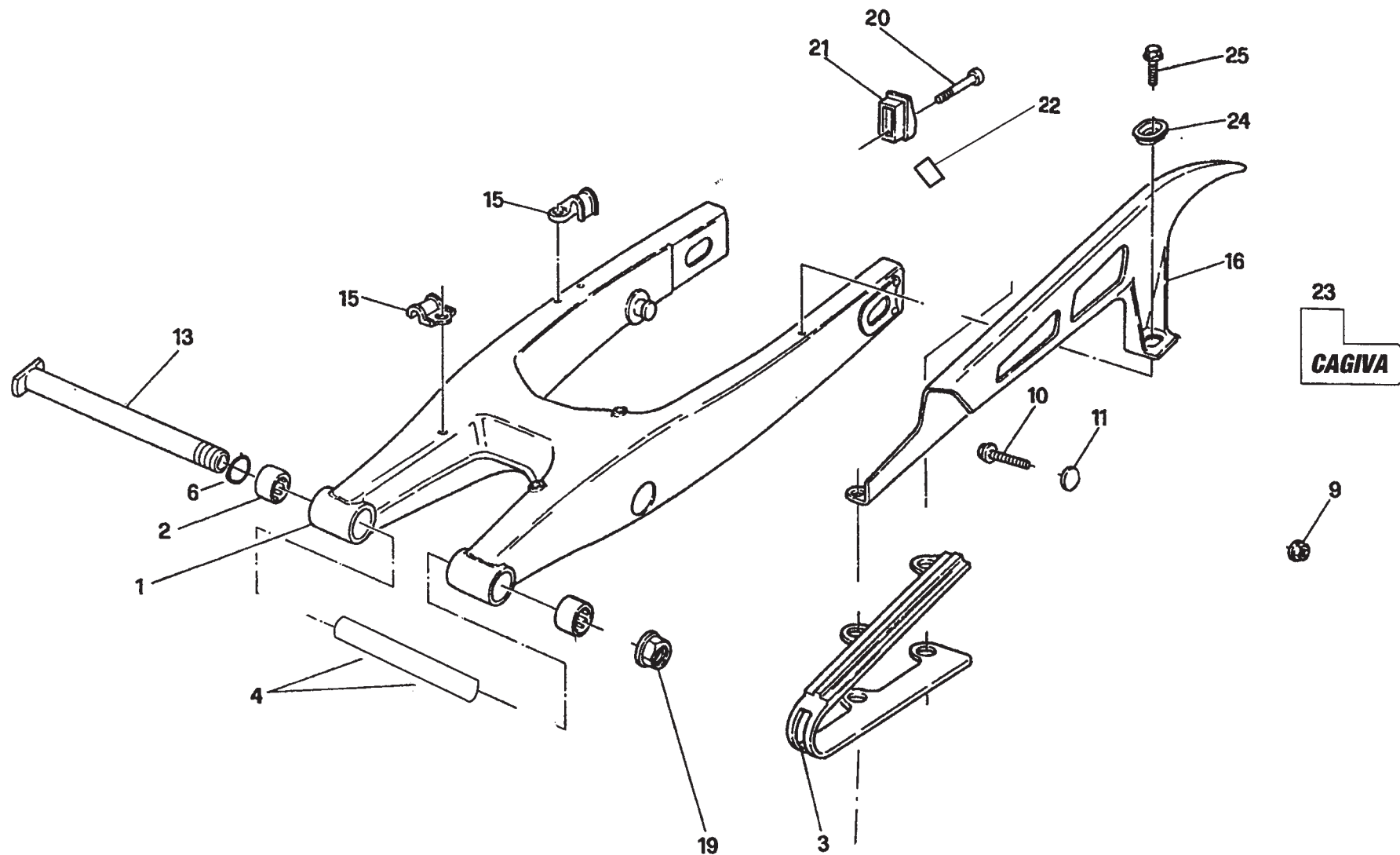
TAVOLA
DRAWING
TABLE
BILD
TABLA

4

SOSPENSIONE ANTERIORE - FRONT FORK ASSEMBLY SUSPENSION AVANT - VORDERTELESKOPGABEL SUSPENSION DELANTERA

Note Notes Markel Notas	Pos. No. Index Pos.	N. Cod. Code No. Nr. Code Code Nr N. Cod.	Q.tà Q.ty Q.te M.ge C.ad	DENOMINAZIONE	NAME	DESIGNATION	BESHREIBUNG	DENOMINACION	Validità Validity Validité Gültig Validez
*	1	ER7051085GI	1	Base di sterzo con perno	Steering crown with pin	Socle de direction avec pivot	Gabelbrücke mit Bolzen	Base de dirección con perno	
*	2	ER510009AA	1	Ghiera registro cuscinetti	Ring nut	Embout	Nutmutter	Virola	
*	3	XH312700	2	Fondello					
*	4	EH800069315	1	Dado	Nut	Ecrou	Mutter	Tuerca	
*	6	ER520222AR	4	Vite (M8x40 mm)	Screw (M8x40 mm)	Vis (M8x40 mm)	Schraube (M8x40 mm)	Tornillo (M8x40 mm)	
*	7	ER501446A	1	Testa di sterzo	Steering head	Tête direction	Lenkkopf	Cabezal de dirección	
*	8	ER505003A	2	Mozzetto superiore	Hub	Moyeau	Radnabe	Cubo	
*	9	N1000220	4	Vite (M8x35 mm)	Screw (M8x35 mm)	Vis (M8x35 mm)	Schraube (M8x35 mm)	Tornillo (M8x35 mm)	
*	10	ER520001AR	4	Vite (M8x30 mm)	Screw (M8x30 mm)	Vis (M8x30 mm)	Schraube (M8x30 mm)	Tornillo (M8x30 mm)	
*	11	EH80G069337	1	Protezione Sx	Guard L.H	Protection D.	Schutz L.	Protección iz.	
*	12	EH80G069338	1	Protezione Dx	Guard R.H.	Protection G.	Schutz R.	Protección der.	
*	13	N1000324	6	Vite	Screw	Vis	Schraube	Tornillo	
*	14	XH236703	6	Bussola	Bushing	Douille	Buchse	Manguito	
*	15	EH8BA070558	2	Anello	Ring	Bague	Ring	Anillo	
*	16	N1000719	2	Vite	Screw	Vis	Schraube	Tornillo	
*	17	N1003006	2	Dado	Nut	Ecrou	Mutter	Tuerca	
*	18	EH800078996	1	Gamba Dx. compl.	R.H. fork leg assy	Fourche complete D.	Telegabel Kpl. R.	Horquilla D compl.	
*	19	ER819101	1	Gruppo pompante DX	Pumping element R	Element de pompage D	Pumpenelement R	Bombeadora compl. D	
*	22	ER760026GB/R	2	Portastelo compl.	Comp. stem holder	Porte-tige compl.	Kpl. Schafthalter	Portavastago	
*	23	ER518669	2	Tubetto	Pipe	Tuyau	Rohr	Tubo	
*	24	ER522226AA	2	Scodellino	Cup	Cuvette	Teller	Cubeta	
*	25	ER523082	2	Anello elastico	Seal ring	Bague d'étanchéité	Dichtungsring	Anillo elástico	
*	26	ER528053	2	Anello di tenuta	Seal ring	Bague d'étanchéité	Dichtungsring	Anillo de retención	
*	27	ER533281	2	Raschiapolvere	Dust scraper	Racloir poudre	Pulverabschaber	Rascador de polvo	
*	28	ER538032B	4	Boccola	Bush	Douille	Buchse	Casquillo	
*	29	ER701102AC	2	Tappo	Plug	Bouchon	Verschluss	Tapòn	
*	30	ER522247DQ	4	Semirondella	Split washer	Demi-rondelle	Halbscheibe	Semiarandela	
*	31	ER528171	2	Anello OR	O-Ring	Bague OR	O-Ring	Anillo OR	
*	32	ER536072	2	Anello	Ring	Bague	Ring	Anillo	
*	35	EH800078997	1	Gamba Sx. com.	Compl. L.H. leg	Jambe G. compl.	Kpl. L. Bein	Pata izq. compl.	
*	36	ER819102	1	Gruppo pompante SX	L pumping element	Element de pompage G	Pumpenelement L	Bombeadora compl. I	
*	40	EH8000A0633	1	Piastrina Sx	Plate	Plaque	Platte	Placa	





WXE-WSM 125

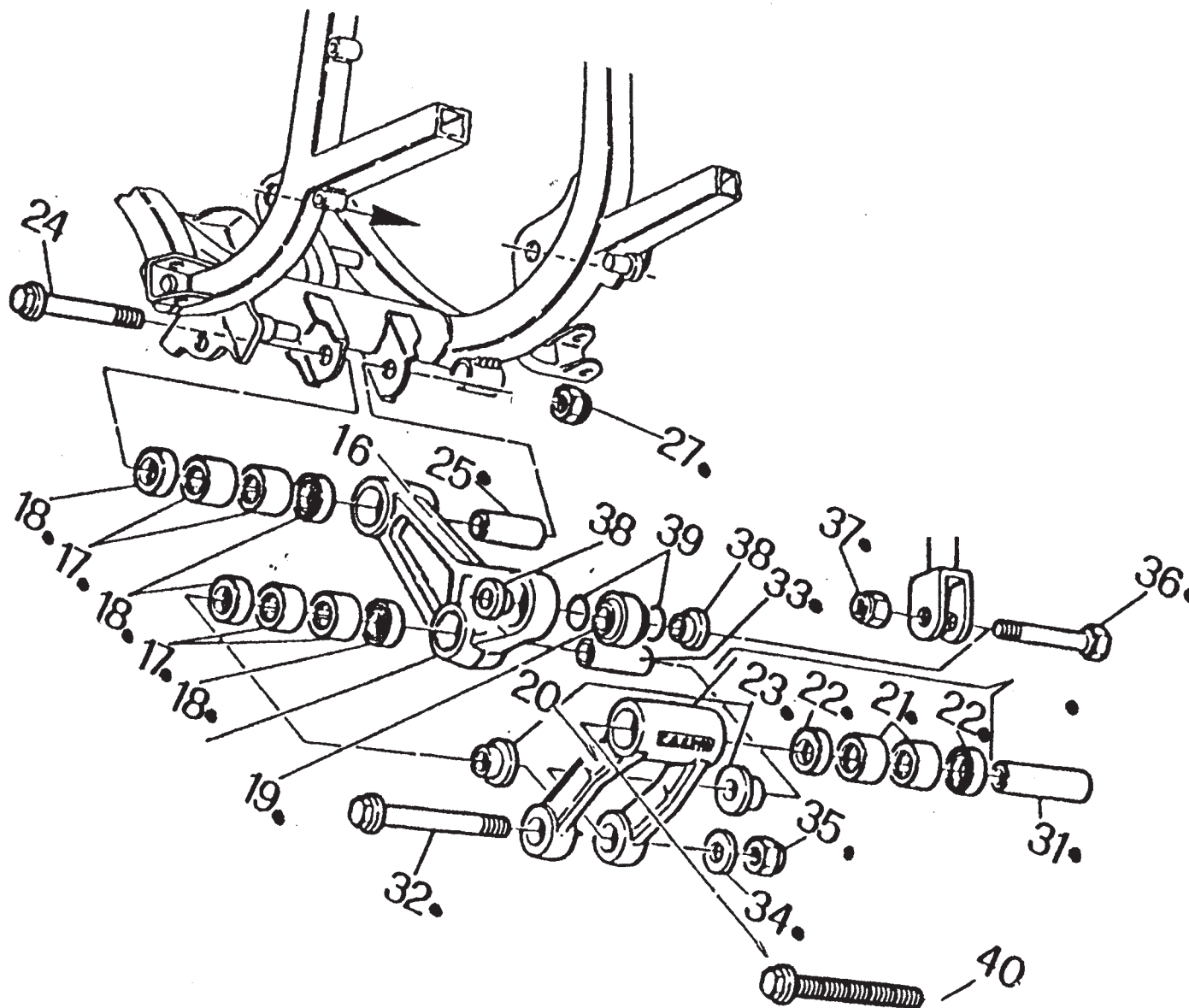
TAVOLA
DRAWING
TABLE
BILD
TABLA

5

FORCELLONE - SWING ARM FOURCHE - GABEL HORQUILLA

Note Notes Markel Notas	Pos. No. Index Pos.	N. Cod. Code No. Nr. Code Code Nr N. Cod.	Q.tà Q.ty Q.te M.ge C.ad	DENOMINAZIONE	NAME	DESIGNATION	BESHREIBUNG	DENOMINACION	Validità Validity Validité Gültig Validez
*	1	XH2949A0	1	Forcellone completo	Compl. fork	Fourche complete	Gabel, Kpl.	Horquilla compl.	2004
	2	NO004401	2	Gabbia a rullini(ø22xø28x18 mm)	Needle cage (ø22xø28x18 mm)	Cage à aiguilles (ø22xø28x18 mm)	Nadelkaefig (ø22xø28x18 mm)	Jaula de agujas del cojinete (ø22xø28x18 mm)	
*	3	XH321300	1	Pattino catena	Chain slider	Glissière	Gleitbahn	Plato cadena	2004
	4	XH280700	1	Distanziale	Spacer	Entretoise	Distanzstück	Separador	
	6	NO012301	2	Anello tenuta	Seal Ring				
	9	N1003001	2	Dado	Nut	Ecrou	Mutter	Tuerca	
	10	N1000906	2	Vite	Screw	Vis	Schraube	Tornillo	
	11	XH236706	2	Bussola	Bushing	Douille	Buchse	Manguito	
	13	N2001201	1	Perno forcellone	Fork pin	Pivot fourche	Gabelbolzen	Perno horquilla	
	15	EH80A073456	2	Guidacavo	Cable guide	Guide câble	Kabelführung	Guía-cable	
	16	XH299200	1	Copricatena	Chain guard	Carter de chaine	Kettenkasten	Cubrecadena	
	19	N1002507	1	Dado	Nut	Ecrou	Mutter	Tuerca	
	20	N1000339	2	Vite	Screw	Vis	Schraube	Tornillo	
	21	XH280800	2	Coperchietto	Cover	Couvercle	Deckel	Tapa	
	22	N1002607	2	Dado	Plug	Bouchon	Verschluss	Tapon	
	23	EH800053137	1	Guidacatena	Chain guide	Guide-chaîne	Kettenführung	Guía-cadena	
	24	EH800059289	1	Scodellino	Cup	Cuvette	Teller	Cubeta	
	25	N1000405	1	Vite	Screw	Vis	Schraube	Tornillo	
*	1	XH2949A1	1	Forcellone completo	Compl. fork	Fourche complete	Gabel, Kpl.	Horquilla compl.	2005/06
*	3	XH364300	1	Pattino catena	Chain slider	Glissière	Gleitbahn	Plato cadena	2005/06





WXE-WSM 125

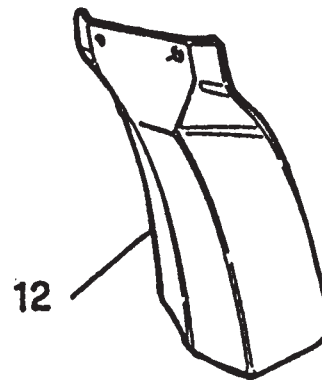
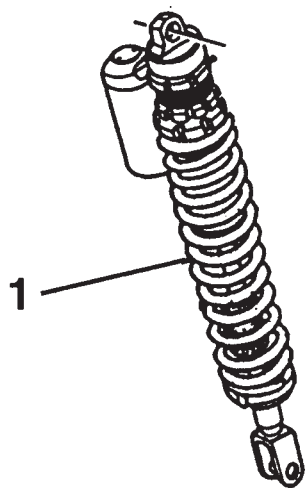
TAVOLA
DRAWING
TABLE
BILD
TABLA

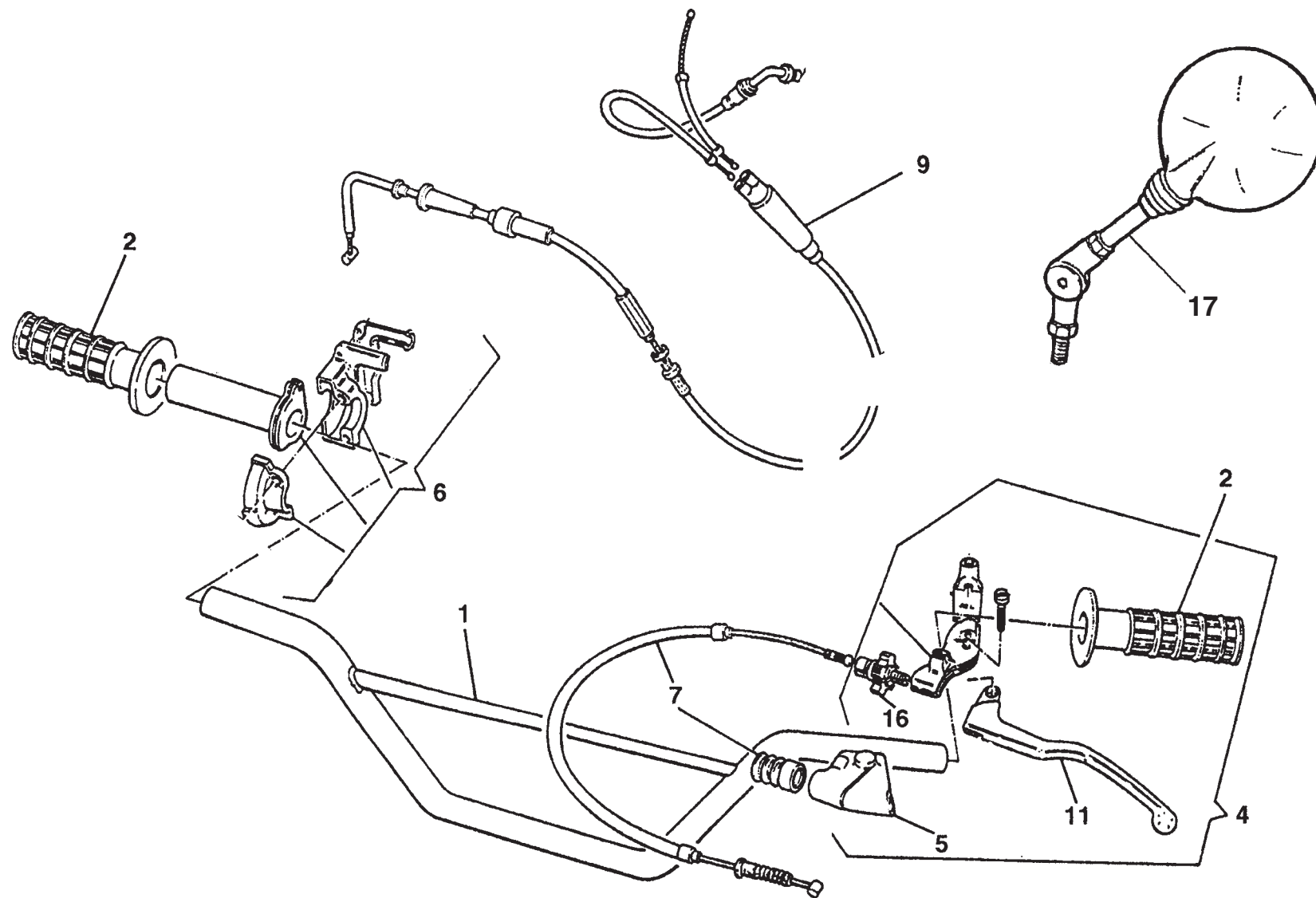
6

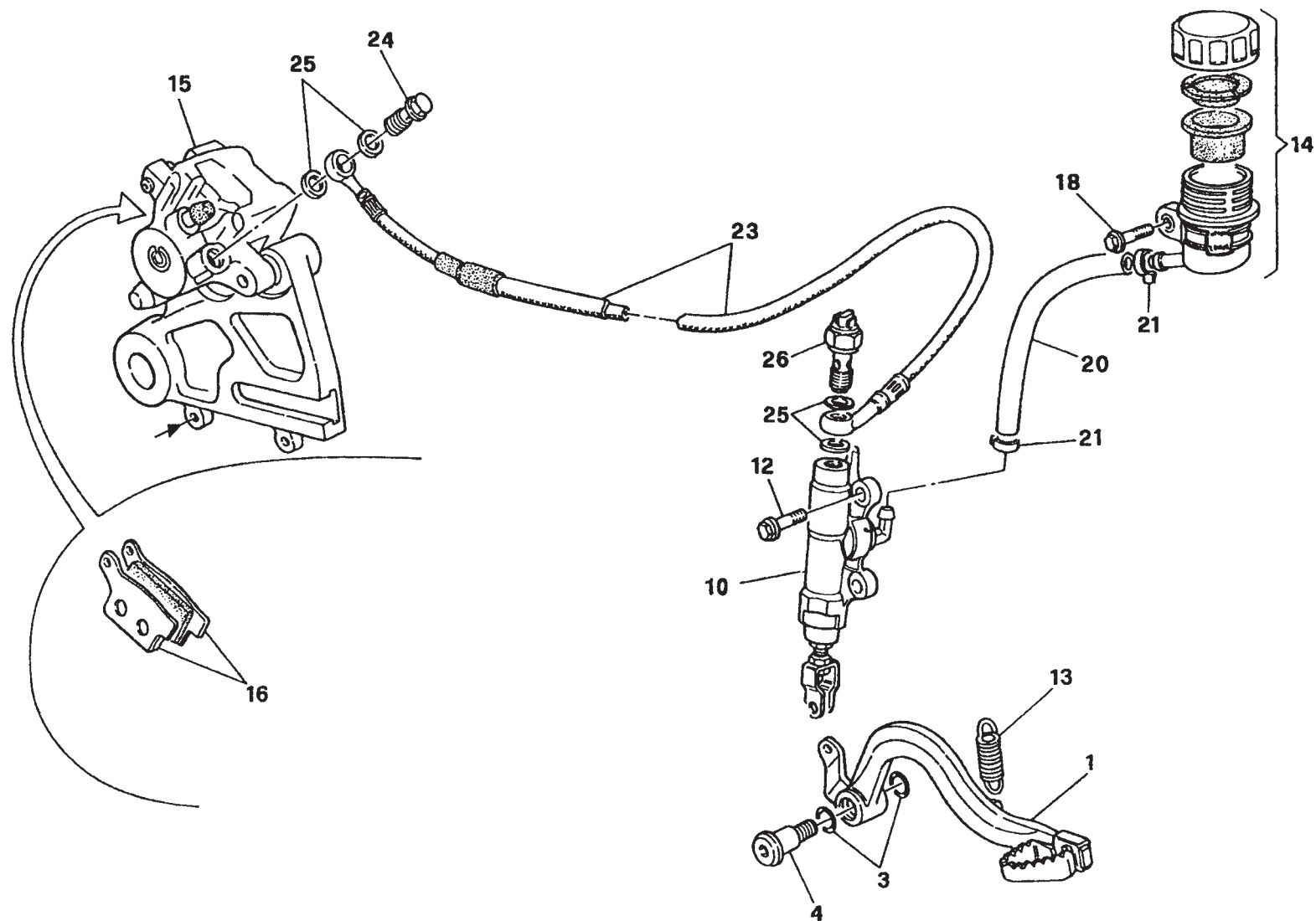
FORCELLONE E SOSPENSIONE POSTERIORE - SWING ARM AND REAR SUSPENSION FOURCHE AT SUSPENSION ARRIÈRE - GABEL UNDHINTERAUFRHÄNGUNG HORQUILLA Z SUSPENSION TRASERA

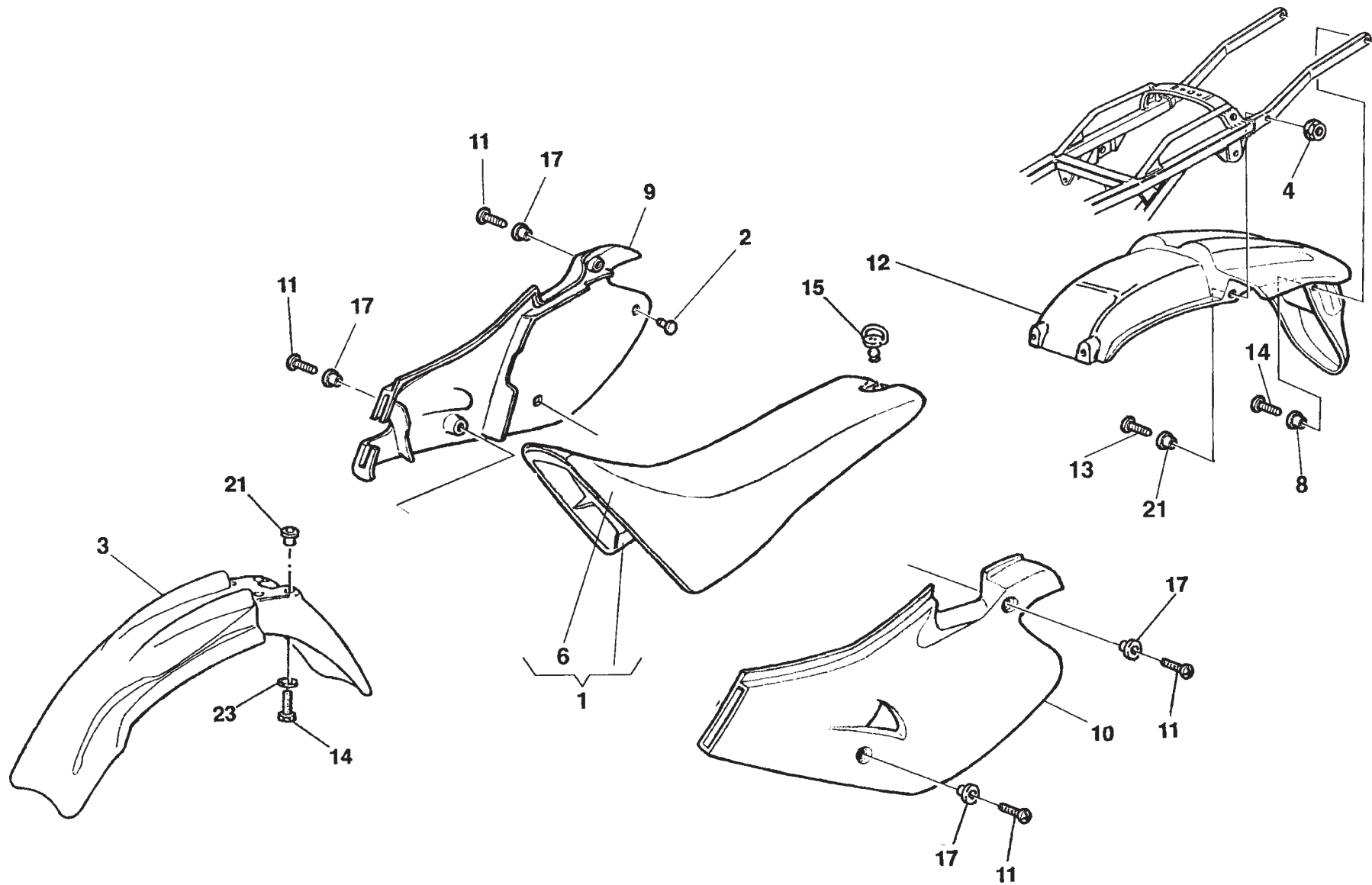
Note Notes Merke Notas	Pos. No. N. Index Pos.	N. Cod. Code No. Nr. Code Code Nr N. Cod.	Q.tà Q.ty Q.te M.ge C.ad	DENOMINAZIONE	NAME	DESIGNATION	BESHREIBUNG	DENOMINACION	Validità Validity Validité Gültig Validez
	16	XH349300	1	Bilanciere compl.	Compensator assy	Culbuteur compl.	Kipphebel kpl.	Cojinete de rodillos	
	17	NO004402	4	Cuscinetti a rullini	Needle bearing	Roulement	à rouleaux	Nadelkäfig	Tuierca
	18	NO012302	4	Anello di tenuta	Seal ring	Bague de retenue	Dichtring	Anillo de retención	
	19	EH800072168	1	Uniball	Uniball	Uniball	Uniball	Uniball	
	20	XH345200	1	Ass. biella	Con. rod assy	Bielle compl.	Pleuel Kpl.	Bielas compl.	
	21	NO004402	2	Cuscinetti a rullini	Needle bearing	Roulement à rouleaux	Nadelkäfig	Tuierca	
	22	NO012302	2	Anello di tenuta	Seal ring	Bague de retenue	Dichtring	Anillo de retención	
	23	XH288000	2	Bussola	Bushing	Douille	Buchse	Casquillo	
	24	N1000333	1	Vite	Screw	Vis	Schraube	Tornillo	
	25	XH269500	1	Spinotto	Gudgeon	Axe	Bolzen	Perno	
	27	N1002504	1	Dado autobloccante	Nut	Ecrou	Mutter	Tuierca	
	31	XH269502	1	Spinotto	Gudgeon	Axe	Bolzen	Perno	
	32	N1000233	1	Vite	Screw	Vis	Schraube	Tornillo	
	33	XH269501	1	Spinotto	Gudgeon	Axe	Bolzen	Perno	
	34	N1001509	2	Rosetta piana	Washer	Rondelle	Scheibe	Arandela	
	35	N1002507	2	Dado autobloccante	Nut	Ecrou	Mutter	Tuierca	
	36	N1000317	2	Vite	Screw	Vis	Schraube	Tornillo	
	37	N1003002	2	Dado autobloccante	Nut	Ecrou	Mutter	Tuierca	
	38	XH288001	2	Bussola	Bushing	Douille	Buchse	Casquillo	
	39	NO012008	2	Anello OR	O-Ring	Bague OR	O-Ring	Anillo OR	
	40	N2001202	1	Vite	Screw	Vis	Schraube	Tornillo	











WXE-WSM 125

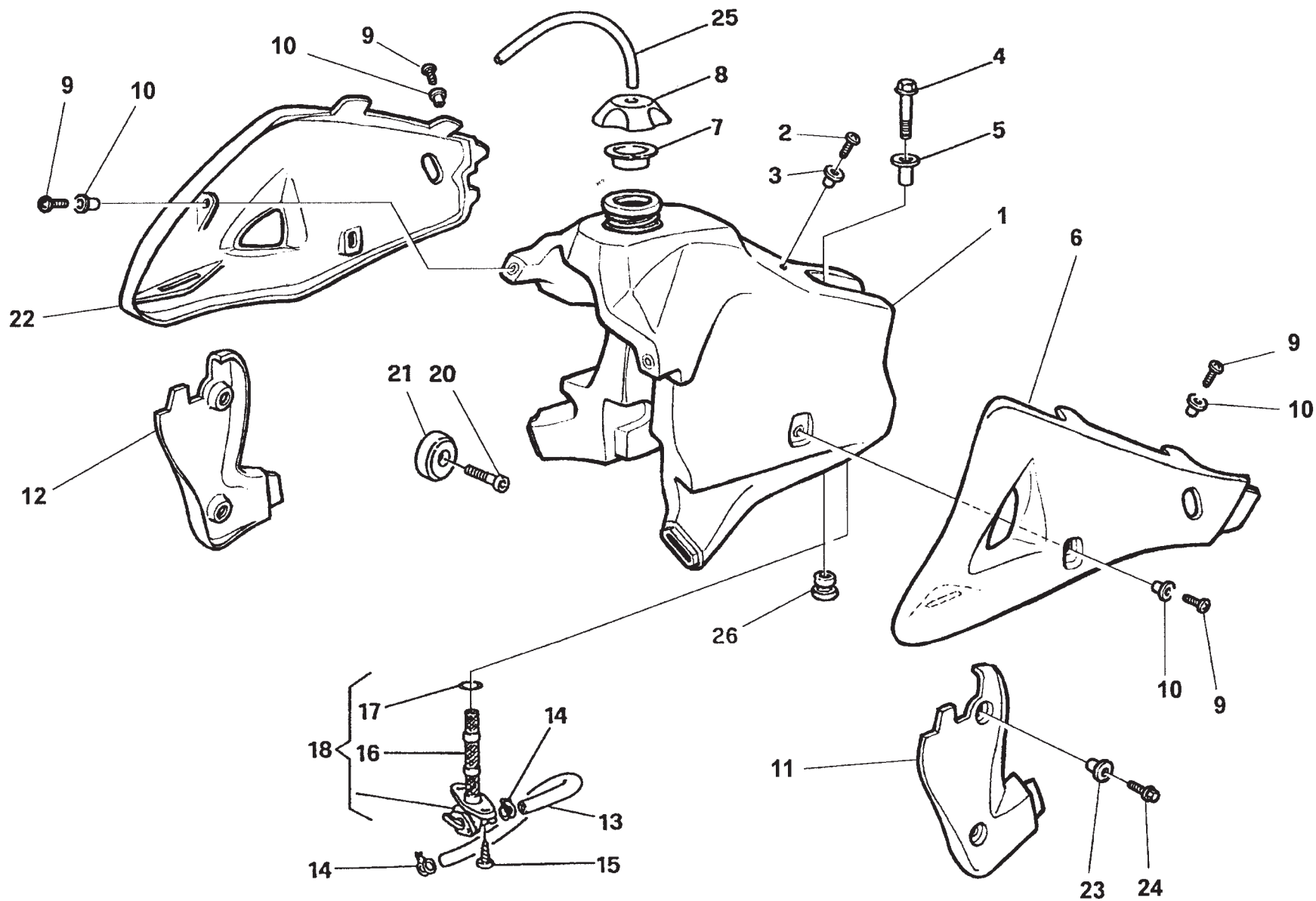
TAVOLA
DRAWING
TABLE
BILD
TABLA

10

PANNELLI LATERALI, PARAFANGHI, SELLA - SIDE PANEL, FENDERS, SEAT PANNEAU, GARDE-BOUES, SIEGE - STREIFEN, KOTFLUGEL, SATTEL PANELES, GUARDABARROS, SILLIN

Note Notes Marken Notas	Pos. No. Index Pos.	N. Cod. Code No. Nr. Code Code Nr N. Cod.	Q.tà Q.ty Q.te M.ge C.ad	DENOMINAZIONE	NAME	DESIGNATION	BESHREIBUNG	DENOMINACION	Validità Validity Validité Gültig Validez
*W/S	1	XH289800	1	Sella grigia/blu	Seat grey	Siège gris	Sattel	Sillín	
	2	N0011304	2	Gommino anticalore	Rubber pad	Pièce caoutchouc	Gummstück	Junta de goma	
W	3	EH8000A1589	1	Parafango anteriore E giallo	Front mudguard	Garde-boue avant	Vord. Kotfluegel	Guarda-barros delantero	
S	3	EH8000A1761	1	Parafango ant. SM giallo	Front mudguard	Garde-boue avant	Vord. Kotfluegel	Guarda-barros del.	
	4	N1003001	2	Dado	Nut	Ecrou	Mutter	Tuerca	
W/S	6	XH295300	1	Riv. sella	Saddle covering	Revelement selle	Sattelverkleidung	Revestimiento sillín	
	8	XH236702	4	Bussola	Bushing	Douille	Buchse	Casquillo	
W	9	XH281000	1	Pannello destro giallo	R.H. panel yellow	Panneau, D. jaune	Streifen. R. gelb	Panel der.	
S	9	XH2810B0	1	Pannello destro nero	R.H. panel black	Panneau, D. noir	Streifen. R. shwarz	Panel der.	
W	10	XH281100	1	Pannello sinistro giallo	L.H. panel yellow	Panneau, G. jaune	Streifen. L. gelb	Panel izq.	
S	10	XH2811B0	1	Pannello sinistro nero	L.H. panel black	Panneau, G. noir	Streifen. L. shwarz	Panel izq.	
	11	N1000904	4	Vite	Screw	Vis	Schraube	Tornillo	
W/S	12	EH8000A0545	1	Parafango posteriore blu	Rear mudguard	Gardeboue arriere	Hint. Kotfluegel	Guarda-barros trasero	
	13	N1000709	2	Vite	Screw	Vis	Schraube	Tornillo	
	14	N1000710	4	Vite	Screw	Vis	Schraube	Tornillo	
	15	XH324400	1	Perno	Pin	Pivot	Bolzen	Perno	
	17	XH236702	4	Boccola	Bushing	Douille	Buchse	Casquillo	
	21	XH236702	4	Bussola	Bushing	Douille	Buchse	Manguito	
	23	N1001512	4	Rosetta	Washer	Rondelle	Scheibe	Arandela	
*	1	XH2898B0	1	Sella nera	Seat black	Siège noir	Sattel shwarz	Sillín	
*W	3	EH8AA073395	1	Parafango anteriore E nero	Front mudguard black	Garde-boue avant noir	Vord. Kotfluegel shwarz	Guarda-barros delantero	
*S	3	EH80A0A1761	1	Parafango anteriore N nero	Front mudguard black N	Garde-boue avant noir N	Vord. Kotfluegel shwarz N	Guarda-barros delantero N	
*S	12	EH8CA0A0545	1	Parafango posteriore nero	Rear mudguard black	Gardeboue arriere noir	Hint. Kotfluegel shwarz	Guarda-barros trasero	





WXE-WSM 125

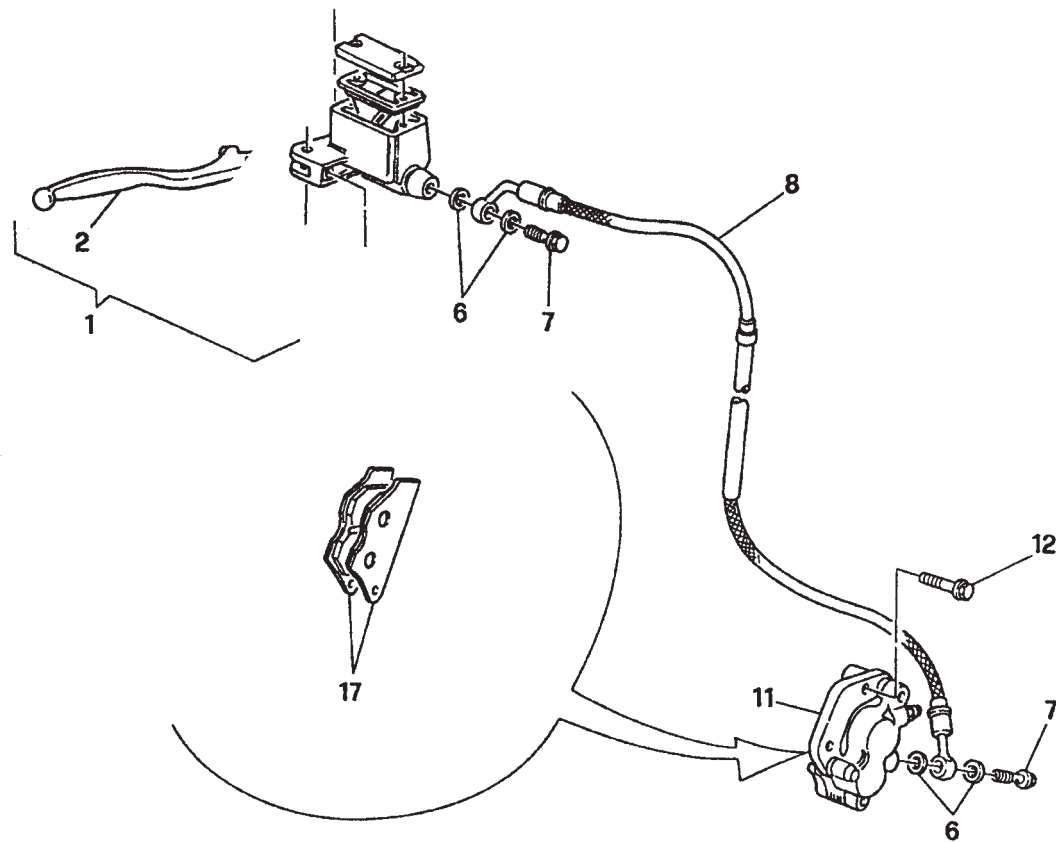
TAVOLA
DRAWING
TABLE
BILD
TABLA

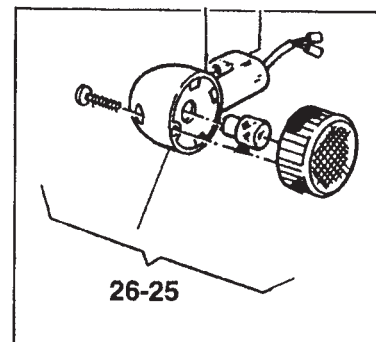
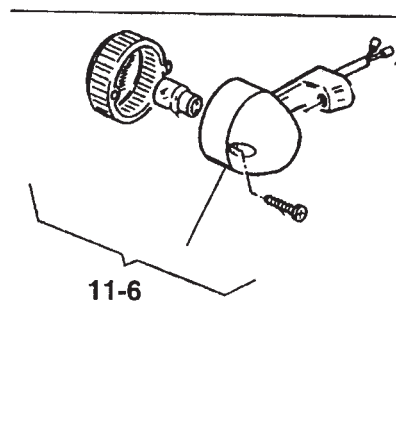
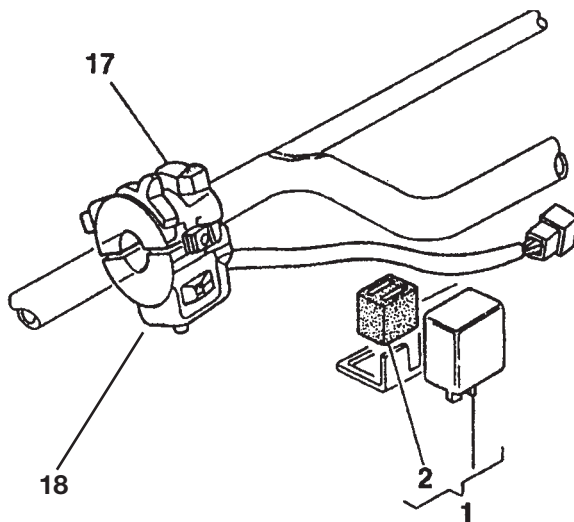
11

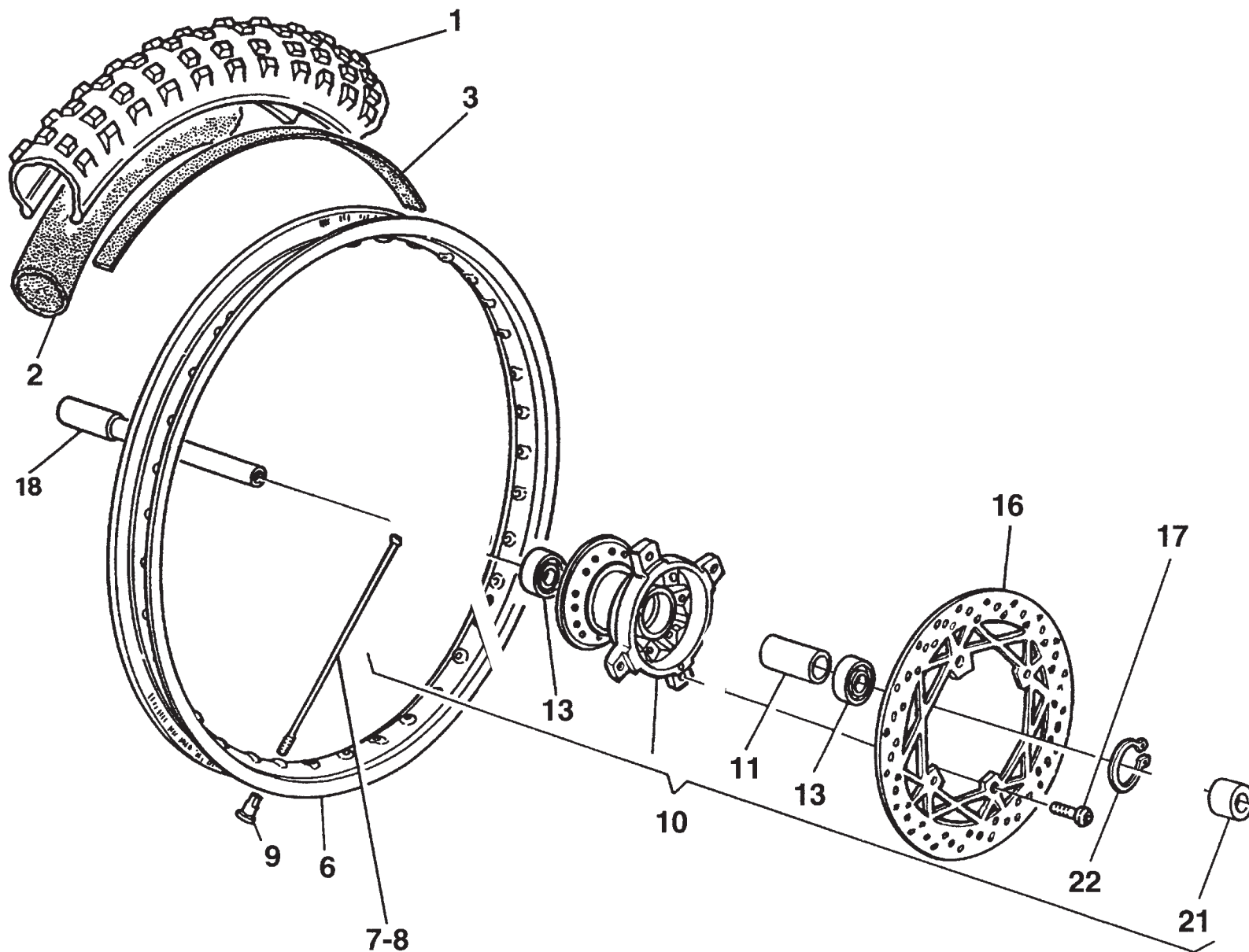
SERBATOIO/ CONVOGLIATORI- GAS TANK/ PANEL RESERVOIR/ FLANC - KRAFTSTOFFBEHALTER/ FLANKE DEPOSITO/ LATERAL

Note Notes Markel Notas	Pos. No. Index Pos.	N. Cod. Code No. Nr. Code Code Nr N. Cod.	Q.tà Q.ty Q.te M.ge C.ad	DENOMINAZIONE	NAME	DESIGNATION	BESHREIBUNG	DENOMINACION	Validità Validity Validité Gultig Validez
	1	EH800088877	1	Serbatoio carburante	Fuel tank	Réservoir carburant	Überdimensioniert Tank	Depósito gasolina	
	2	N1000103	1	Vite	Screw	Vis	Schraube	Tornillo	
	3	XH223900	1	Distanziale	Spacer	Entretoise	Distanzstück	Separador	
	4	N1000717	1	Vite	Screw	Vis	Schraube	Tornillo	
	5	XH236708	1	Distanziale	Spacer	Entretoise	Distanzstück	Separador	
W	6	XH320900	1	Convogliatore SX (WXE) giallo	L. side panel yellow	Flanc G. jaune	Flanke L. jelt	Lateral I.	
S	6	XH3209B0	1	Convogliatore SX (WSM) nero	L. side panel black	Flanc G. noir	Flanke L. shwarz	Lateral I.	
	7	EH800056381	1	Guarnizione	Gasket	GGarniture	Dichtung	Junta	
	8	XH222500	1	Tappo	Plug	Bouchon	Verschluss	Tapón	
	9	N1000903	8	Vite	Screw	Vis	Schraube	Tornillo	
	10	XH236704	8	Bussola	Bushing	Douille	Buchse	Manguito	
	11	EH800093883	1	Protezione Sx	L.H. protection	Protection G.	Schutz Linke	Protección izquierda	
	12	EH800093017	1	Protezione Dx	R.H. protection	Protection D.	Schutz Rechte	Protección derecha	
	13	NO011503	1	Condotto benzina	Pipe Tuyau	Rohr	Tubo		
	14	N3010001	2	Fascetta	Split ring	Anneau ressort	Sprengring	Anillo elástico	
	15	N1000402	2	Vite	Screw	Vis	Schraube	Tornillo	
	16	EH800038748	1	Filtro benzina	Fuel filter	Filtre essence	Benzinfilter	Filtro gasolina	
	17	NO012010	1	Anello OR	O-Ring	Bague OR	O-Ring	Anillo OR	
	18	EH800043592	1	Rubinetto completo	Cock assy	Robinet compl.	Kraftstoffahn, Kpl.	Llave de paso compl.	
	20	N1000213	2	Vite	Screw	Vis	Schraube	Tornillo	
	21	EH800040813	2	Tampone	Pad	Tampon	Stopfen	Tampón	
W	22	XH321000	1	Convogliatore DX (WXE) giallo	R. side panel yellow	Flanc D. jaune	Flanke R. jelt	Lateral D.	
S	22	XH3210B0	1	Convogliatore DX (WSM) nero	R. side panel black	Flanc D. noir	Flanke R. shwarz	Lateral D.	
	23	XH236702	4	Bussola	Bushing	Douille	Buchse	Manguito	
	24	N1000714	4	Vite	Screw	Vis	Schraube	Tornillo	
	25	NO011504	1	Tubetto sfiato	Battery breather pipe	Event batterie	Batterieentlüfter	Tubo de purga batería	
	26	EH800069035	1	Gommino	Rubber pad	Pièce caoutchouc	Gummistück	Junta de goma	









WXE-WSM 125

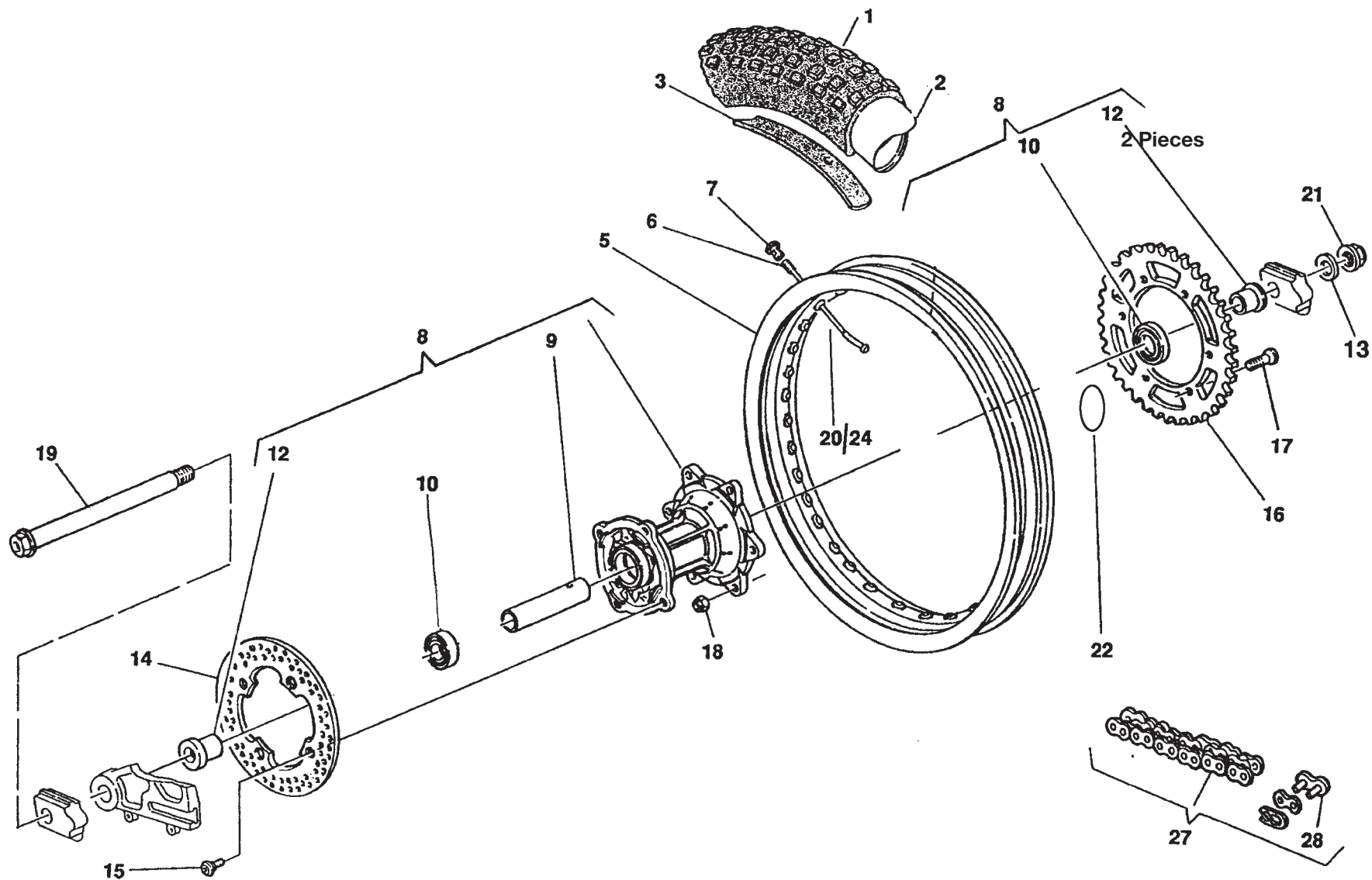
TAVOLA
DRAWING
TABLE
BILD
TABLA

14

RUOTA ANTERIORE - FRONT WHEEL ROUE AVANT - VORTERRAD RUEDA DELANTERA

Note Notes Merke Notas	Pos. No. Index Pos.	N. Cod. Code No. Nr. Code Code Nr N. Cod.	Q.tà Q.ty Q.ite M.ge C.ad	DENOMINAZIONE	NAME	DESIGNATION	BESHREIBUNG	DENOMINACION	Validità Validity Validité Gültig Validez
W	1	NO005513	1	Pneumatico (90/90 21")	Tyre (90/90 21")	Pneu (90/90 21")	Reifen (90/90 21")	Neumático (90/90 21")	
S	1	NO005513	1	Pneumatico (120/70 17")	Tyre (120/70 17")	Pneu (120/70 17")	Reifen (120/70 17")	Neumático (120/70 17")	
W	2	NO006514	1	Camera d'aria	Air tube	Chambre à air	Luftschlauch	Cámara de aire con válvula	
S	2	NO006506	1	Camera d'aria	Air tube	Chambre à air	Luftschlauch	Cámara de aire con válvula	
W	3	NO007004	1	Fascia copriraggi	Rim strip	Bande	Band	Banda	
S	3	NO007006	1	Fascia copriraggi	Rim strip	Bande	Band	Banda	
W	6	XH297200	1	Cerchio (1,6 x 21")	Rim (1,6 x 21")	Jante (1,6 x 21")	Felge (1,6 x 21")	Llanta (1,6 x 21")	
*S	6	XH2982A0	1	Cerchio nero	Rim black	Jante noir	Felge schwarz	Llanta	
W	7	XH297300	18	Raggio destro	Spoke R.	Bras D.	Speiche R.	Radio der.	
S	7	XH297301	18	Raggio destro	Spoke R.	Bras D.	Speiche R.	Radio der.	
W	8	XH297300	18	Raggio sinistro	Spoke L.	Bras G.	Speiche L.	Radio izq.	
S	8	XH297301	18	Raggio sinistro	Spoke L.	Bras G.	Speiche L.	Radio izq.	
	9	N2007502	36	Nipplo	Nipple	Nipple	Nippel	Nipple	
	10	XH282400	1	Mozzo completo	Hub assy	Moyeau compl.	Radnabe, Kpl.	Cubo compl.	
	11	EJ39099192	1	Distanziale	Spacer	Entretoise	Distanzstück	Separador	
	13	NO003511	2	Cuscinetto a sfere	Ball bearing	Roulement à billes	Kugellager	Cojinete de bolas	
	16	XH282800	1	Disco freno	Brake disc	Disque frein	Bremsscheibe	Disco freno	
	17	N1000207	6	Vite	Screw	Vis	Schraube	Tornillo	
	18	XH268800	1	Perno ruota	Pin	Pivot	Bolzen	Perno	rueda
	21	XH238914	1	Distanziale	Spacer	Entretoise	Distanzstück	Separador	
	22	EJ39099272	1	Anello elastico	Split ring	Anneau ressort	Sprengring	Anillo elástico	
*S	6	XH297200	1	Cerchio (1,5 x 17") blu	Rim (3,5 x 17") blue	Jante (3,5 x 17") blu	Felge (3,5 x 17") blu	Llanta (3,5 x 17")	





WXE-WSM 125

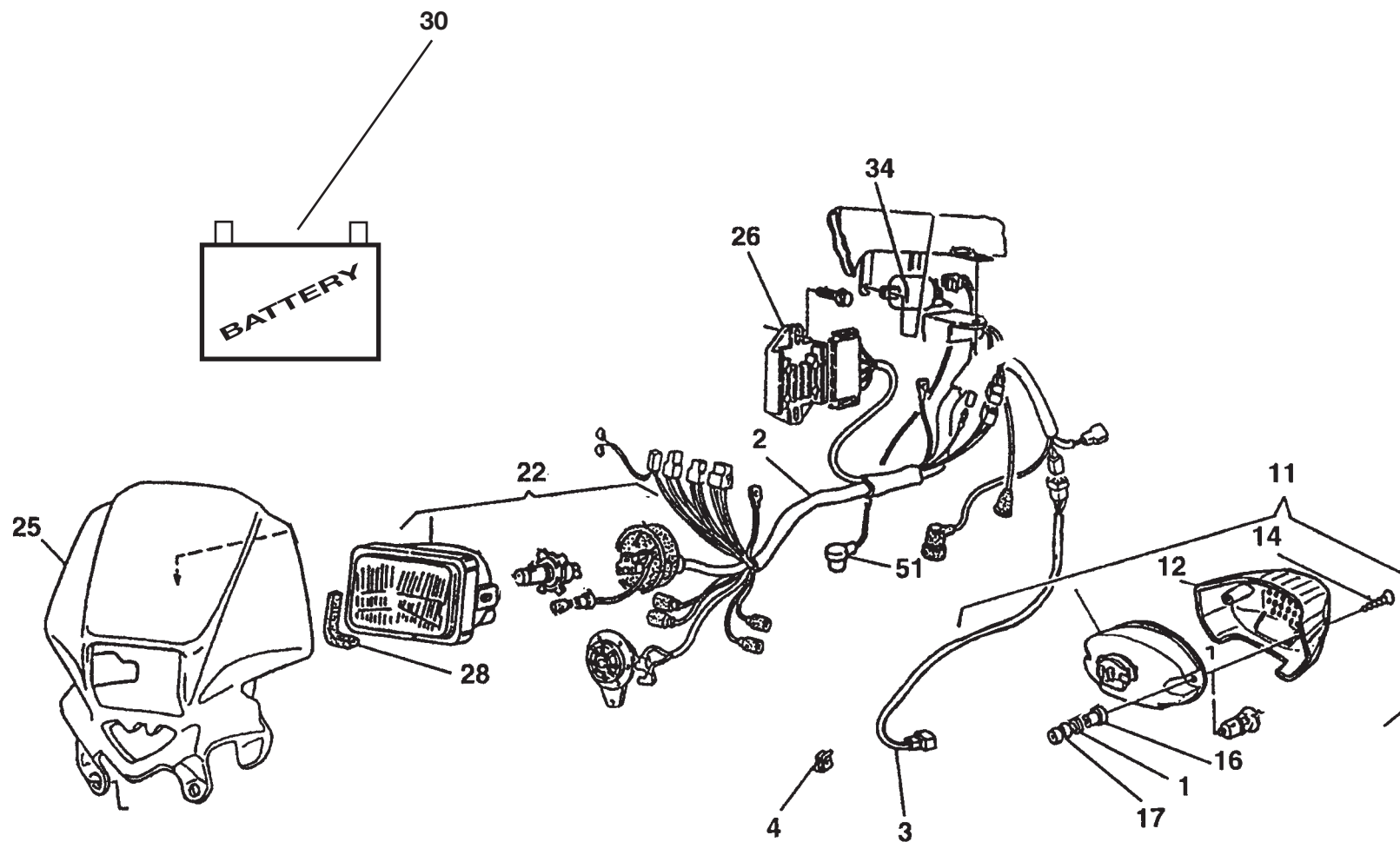
TAVOLA
DRAWING
TABLE
BILD
TABLA

15

RUOTA POSTERIORE - REAR WHEEL - ROUE ARRIERE - HINTERRAD RUEDA TRASERA

Note Notes Merke Notas	Pos. No. Index Pos.	N. Cod. Code No. Nr. Code Code Nr N. Cod.	Q.tà Q.ty Q.te M.ge C.ad	DENOMINAZIONE	NAME	DESIGNATION	BESHREIBUNG	DENOMINACION	Validità Validity Validité Gültig Validez
W	1	NO005512	1	Pneumatico	Tyre	Pneu	Reifen	Neumático	
S	1	NO005515	1	Pneumatico (150/60 - 17")	Tyre	Pneu	Reifen	Neumático	
W	2	NO006505	1	Camera d'aria	Air tube	Chambre à air	Luftschlauch	Cámara de aire con válvula	
S	2	NO006507	1	Camera d'aria	Air tube	Chambre à air	Luftschlauch	Cámara de aire con válvula	
W	3	NO007005	1	Fascia copriraggi	Rim strip	Bande	Band	Banda	
S	3	NO007006	1	Fascia copriraggi	Rim strip	Bande	Band	Banda	
W	5	XH297400	1	Cerchio (2,15 x 18")	Rim (2,15 x 18")	Jante (2,15 x 18")	Felge (2,15 x 18")	Llanta (2,15 x 18")	
S	5	XH2984A0	1	Cerchio nero	Rim black	Jante noir	Felge schwarz	Llanta	
W	6	XH297500	18	Raggio (l=174 mm) Corona	Spoke (l=174 mm)	Bras (l=174 mm)	Speiche (l=174 mm)	Radio (l=174 mm)	
W	6	XH297501	18	Raggio (l=178 mm) Disco	Spoke (l=178 mm)	Bras (l=178 mm)	Speiche (l=178 mm)	Radio (l=178 mm)	
	7	N2007503	36	Nipplo	Nipple	Nipple	Nippel	Nipple	
	8	XH351200	1	Mozzo completo	Hub assy	Moyeau compl.	Radnabe, Kpl.	Cubo compl.	
	9	EJ39099216	1	Distanziale SX	Spacer SX	Entretoise SX	Distanzstück SX	Separador SX	
	10	NO003510	2	Cuscinetto (ø25xø47x16 mm)	Bearing (ø25xø47x16 mm)	Roulement (ø25xø47x16 mm)	Kugellager ø25xø47x16 mm)	Cojinete (ø25xø47x16 mm)	
	12	EJ49099068	1	Distanziale	Spacer	Entretoise	Distanzstück	Separador	
	13	N1001511	1	Rosetta	Washer	Rondelle	Scheibe	Arandela	
	14	XH341800	1	Disco freno	Brake disc	Disque frein	Bremsscheibe	Disco freno	
	15	N1000207	5	Vite	Screw	Vis	Schraube	Tornillo	
	16	XH281407	1	Corona (Z = 50)	Ring gear (Z = 50)	Couronne (Z = 50)	Kranz (Z = 50)	Corona (Z = 50)	
	17	N1000707	6	Vite	Screw	Vis	Schraube	Tornillo	
	18	N1003003	6	Dado	Nut	Ecrou	Mutter	Tuerca	
	19	XH268900	1	Perno	Pin	Pivot	Bolzen	Perno	
S	20	XH297502	18	Raggio Corona	Spoke	Bras	Speiche	Radio	
S	24	XH297503	18	Raggio Disco	Spoke	Bras	Speiche	Radio	
	21	N1003005	1	Dado	Nut	Ecrou	Mutter	Tuerca	
	22	XH238924	1	Distanziale	Spacer	Entretoise	Distanzstück	Separador	
	27	NO009013	1	Catena 5/8"x1/4"(114maglie)	Chain 5/8"x1/4"(114 links)	Chaîne 5/8"x1/4"(114maillon)	Kette 5/8"x1/4"(114Schake)	Cadena 5/8"x1/4"(114malla)	
	28	NO009103	1	Giunto	Coupling	Joint	Kupplung	Junta	
S	5	XH2984C0	1	Cerchio blu	Blu Rim	Jante blue	Felge blue	Llanta	
	12	EJ490990691	1	Distanziale DX	Spacer DX	Entretoise DX	Distanzstück DX	Separador DX	





WXE-WSM 125

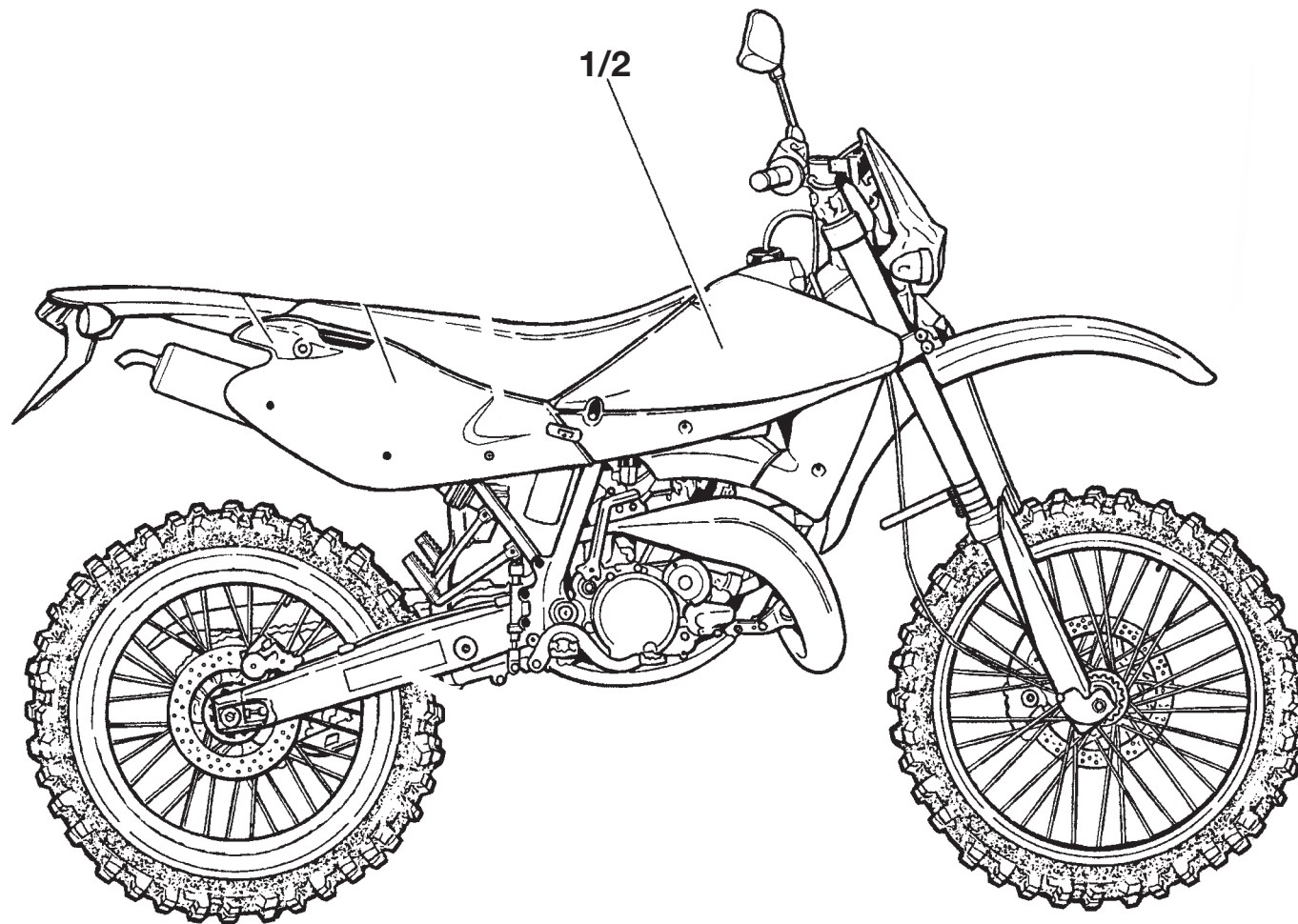
TAVOLA
DRAWING
TABLE
BILD
TABLA

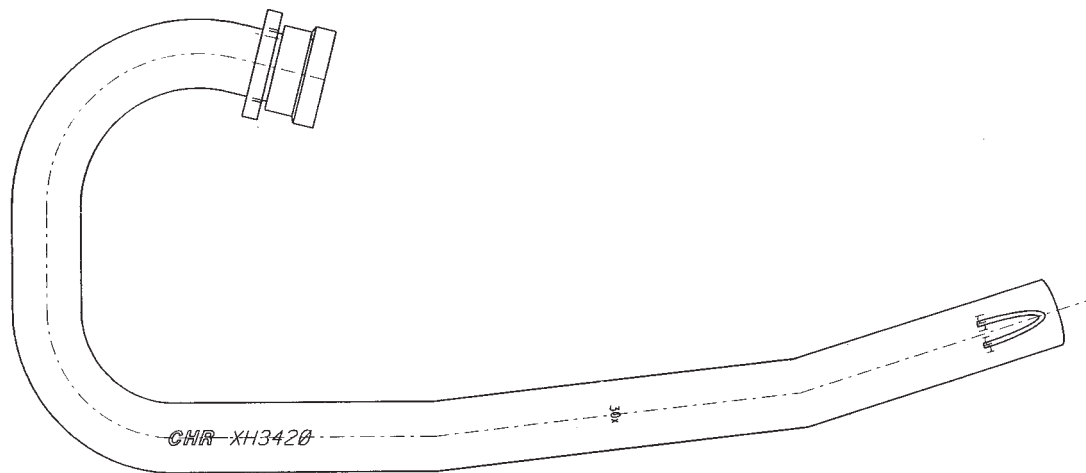
16

IMPIANTO ELETTRICO, PORTATARGA, PORTANUMERO - ELECTRIC SYSTEM, PLATE HOLDER, NUMBER HOLDER - INSTALLATION ELECT., PORTE-BALAI, PORTE-NOMBRE - ELEKTR. ANLAGE, SCHILDTRAEGER, NUMMERTRAGER - INSTALAC. ELECTR., PORTA-MATRICULA, PORTA NUMERO

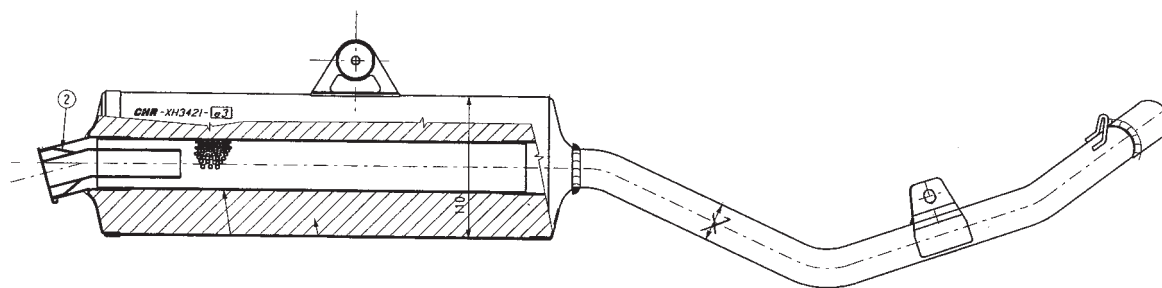
Note Notes Marken Notas	Pos. No. Index Pos.	N. Cod. Code No. Nr. Code Code Nr N. Cod.	Q.tà Q.ty Q.te M.ge C.ad	DENOMINAZIONE	NAME	DESIGNATION	BESHREIBUNG	DENOMINACION	Validità Validity Validité Gültig Validez
	1	N1001513	2	Rosetta piana	Washer	Rondelle	Scheibe	Arandela	
	2	XH368200	1	Gruppo principale cavi	Cable assy	Cables compl.	Kabel Kpl.	Grupo principal cables	
	3	XH290500		Cavo posteriore	Cable	Cable	Kabel	Cable	
	4	EG005120610	1	Passacavo	Fairlead	Passe-câble	Kabelführung	Prensa-cable	
	11	EH800088873	1	Fanale posteriore completo	Tail light	Feux derniere	Hinterleuchte	Faro trasero	
	12	EH8A0094119	1	Lente	Lens	Loupe	Linse	Lente	
	14	N1000412	2	Vite	Screw	Vis	Schraube	Tornillo	
	16	XH288100	2	Distanziale	Spacer	Entretoise	Distanzstück	Separador	
	17	N0011301	2	Gommino	Rubber pad	Pièce caoutchouc	Gummistück	Junta de goma	
	22	XH287500	1	Gruppo ottico completo	Optical group	Groupe optique	Optische Gruppe	Grupo óptico	
*	25	EH8000A0233	1	Cupolino blu	Fairing blue	Carenage blu	Verkleidung blu	Cùpula blu	
	26	ELYBR0706603000	1	Regolatore	Regulator	Regulateur	Regler	Regulador	
	28	XH301900	1	Guarnizione	Gasket	Garniture	Dichtung	Junta	
	34	ELYBR0167	1	Bobina	Coil	Bobine	Zundspule	Bobina	
	51	ELYBR0168	1	Pipetta	Pipette	Pipette	Pipette	Pipa	
		EH800099650	1	Strumento Digitale	Digital takimeter	Digital takimeter	Digital takimeter	Digital takimeter	
		EH8000A0883	1	Guscio spie Cpl	Complete	Complete	Complete	Complete	
		XH320001	1	Spia neutra	Spy Neutral	Spy Neutral	Spy Neutral	Spy Neutral	
		XH291001	1	sensore magnetico con cavo	Tak. cable	Tak. cable	Tak. kabel	Tak. cable	
		XH290900	1	sensore magnetico per disco	Disc sensor	Disque sensor	Bremscheibe sensor	Disc sensor	
		XH2929A0	1	Piastra sup. conta km.	Plate tak.	Plaque tak.	Platte tak.	Placa tak.	
*	25	EH80A0A0233	1	Cupolino nero	Fairing black	Carenage noir	Verkleidung shwarz	Cùpula nero	
	30	XH330600		Batteria	Battery	Battery	Battery	Battery	







XH 342000 TUBO - PIPE



XH 342100 SIL - SILENCIOR

XH 374800 SIL - KIT VITI/GOMMINI KIT SCREWS/RUBBUR

